

11th EUROPEAN CONFERENCE ON HEALTH ECONOMICS



EUHEA CONFERENCE 2016

Know the Ropes – Balancing Costs and Quality in Health Care

JULY 13–16, 2016

*Hosted by the Hamburg Center for Health Economics,
joint center of the University of Hamburg and
the University Medical Center Hamburg-Eppendorf (UKE)*



hche

Hamburg Center
for Health Economics

OVERVIEW SCHEDULE

July 13	July 14	July 15	July 16
Registration open 08:00 am - 06:30 pm ESA	Registration open 08:00 am - 06:00 pm ESA	Registration open 08:00 am - 06:00 pm ESA	Registration open 08:00 am - 12:00 pm ESA
Pre-conference workshops 09:00 am - 12:00 pm ESA West	First plenary 09:00 am - 10:00 am Lecture hall A	Parallel sessions 09:00 am - 10:30 am ESA Ost/West	Parallel sessions 09:00 am - 10:30 am ESA Ost/West
Coffee break 12:00 am - 01:00 pm ESA West	Coffee break 10:00 am - 10:30 am ESA / ESA Ost/West	Coffee break 10:30 am - 11:00 am ESA / ESA Ost/West	Coffee break 10:30 am - 10:45 am ESA / ESA Ost/West
Pre-conference workshops 01:00 am - 04:00 pm ESA West	Parallel sessions 10:30 am - 12:00 pm ESA Ost/West	Parallel sessions 11:00 am - 12:30 pm ESA Ost/West	Parallel sessions 10:45 am - 12:15 pm ESA Ost/West
	Lunch / Poster sessions 12:00 pm - 01:00 pm ESA / ESA Ost/West / ESA 3 floor	Satellite symposium 12:30 pm - 01:30 pm Lecture hall M	Transfer break 12:15 pm - 12:30 pm
	Parallel sessions 01:00 pm - 02:30 pm ESA Ost/West	Lunch / Poster sessions 12:30 pm - 01:30 pm ESA / ESA Ost/West / ESA 3 floor	Closing Plenary 12:30 pm - 01:30 pm Lecture hall A
	Coffee break 02:30 pm - 02:45 pm ESA / ESA Ost / West	Parallel sessions 01:30 pm - 03:00 pm ESA Ost/West	Closing reception 01:30 pm - 02:30 pm ESA
	Parallel sessions 02:45 pm - 04:15 pm ESA Ost/West	Coffee break 03:00 pm - 03:15 pm ESA / ESA Ost/West	
	Coffee break 04:15 pm - 04:30 pm ESA / ESA Ost/West	Parallel sessions 03:15 pm - 04:45 pm ESA Ost / West	
	Parallel sessions 04:30 pm - 06:00 pm ESA Ost/West	Coffee break 04:45 pm - 05:00 pm ESA / ESA Ost / West	
	Transfer break 06:00 pm - 06:15 pm	Second plenary 05:00 pm - 06:00 pm Lecture hall A	
	EuHEA Board Meeting / Assembly 06:15 pm - 07:00 pm Senate lecture hall (ESA)		
Opening reception in the Hamburg City Hall 07:00 pm - 09:00 pm Hamburg City Hall		EuHEA Conference 2016 Evening Event 07:00 pm - 12:00 pm Cap San Diego	

TABLE OF CONTENTS



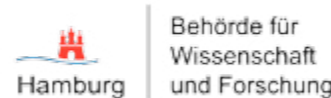
04	Sponsors
05	Welcome
06	About Us
07	Scientific Committee
	Local Organizing Committee
08	EuHEA Board of Directors
09	General Information
15	Social Program
19	Plenary Speakers
23	Program
73	Venue Plan
81	Speakers

We would like to thank the sponsors and supporters of the EuHEA Conference 2016:

Corporate Sponsors:



Supporters:



Liability for financial risk:

Fakultät für Betriebswirtschaft (HBS Hamburg Business School)

Welcome to the EuHEA Conference 2016



Dear colleagues,

We are delighted to welcome you to the biannual EuHEA Conference (formerly known as the European Conference on Health Economics [ECHE]), with this year's theme: "Know the Ropes - Balancing Costs and Quality in Health Care". "Know the ropes" is a nautical idiom, reflecting Hamburg's rich maritime heritage on the river Elbe. "Balancing costs and quality", emphasizes the universal challenge for health care systems around the globe, and we look forward to developing new ideas in this field during the conference.

The Hamburg Center for Health Economics (HCHE) is proud to host the EuHEA Conference 2016. Hamburg is the first German city to host a major health economics conference, and is the perfect location to stage such an event given the work of the HCHE, of Hamburg's strong health care sector and the city's excellent transport connections. The conference venue is the University of Hamburg, which is located in the heart of the city, allowing guests to enjoy Hamburg's historic sites during their free time, such as the famous harbor, the Speicherstadt and the Alster Lake.

The opening reception will take place in the Hamburg City Hall (Hamburger Rathaus). This neo-renaissance building was constructed in 1897 and is one of the most impressive sights in Hamburg. The evening event will take place aboard the Cap San Diego, the largest museum cargo ship in the world, built in 1961 and formerly known as the „White Swan of the South Atlantic.“

We hope that the EuHEA Conference 2016 will provide participants with an excellent opportunity to exchange ideas and discuss innovations in the field of health economics.

We wish everyone an interesting and informative stay and hope you will enjoy the conference's scientific, social and evening programs.

Yours faithfully,

Prof. Dr. Jonas Schreyögg on behalf of the Conference Host Organizing Committee

ABOUT US



- The Hamburg Center for Health Economics (HCHE) is a joint research center of the University of Hamburg and the University Medical Center Hamburg-Eppendorf (UKE).
- The HCHE is one of four national research centers for health economics supported by the German Federal Ministry of Education and Research. Founded in 2010, the center has already become one of the largest centers for health economic research in Europe.
- A unique feature of the center is its interdisciplinary approach, based on the integrated work of economists and physicians.
- The HCHE employs 60 researchers focusing on five major research areas: financing health care; economic evaluation; population health; hospitals and physicians; and pharmaceutical markets.
- In 2017, the HCHE, together with five European partner universities (University of York, Universidade Nova de Lisboa, University of Southern Denmark, Bocconi University, Erasmus University Rotterdam) and the global medical device manufacturer St. Jude Medical will launch a European Training Network for doctoral students entitled “Improving Quality of Care in Europe”. The grant comes from the European Commission’s Marie Skłodowska Curie program, which supports transnational and interdisciplinary research as part of the EU research framework program, Horizon 2020.
- The HCHE is dedicated to high standards of research, sharing expertise and insights with practitioners through active external communication and provision of policy advice.

SCIENTIFIC COMMITTEE

Friedrich Breyer, University of Konstanz (Chair)

Elske van den Akker, Leiden University

Matteo Lippi Bruni, University of Bologna

Tomasz Hermanowski, Medical University of Warsaw

William Hollingsworth, University of Bristol

Tor Iversen, University of Oslo

Florence Jusot, University of Paris-Dauphin

Lars-Åke Levin, Linköping University

Céu Mateus, Lancaster University

Jürgen Maurer, University of Lausanne

Gerald Pruckner, Johannes Kepler University Linz

Pekka Rissanen, University of Tampere

Alexandrina Stoyanova, University of Barcelona

LOCAL ORGANIZING COMMITTEE

Jonas Schreyögg, University of Hamburg (Chair)

Elena A. Phillips, University of Hamburg

Mathias Kifmann, University of Hamburg

Hans-Helmut König, University Medical Center Hamburg-Eppendorf

Tom Stargardt, University of Hamburg

President

Pedro Pita Barros, Universidade Nova de Lisboa

President elect

Andrew Jones, University of York

Executive Secretary

Stefan Felder, University of Basel

Board Member

Friedrich Breyer, University of Konstanz

Board Member

Florence Jusot, University Paris-Dauphin

Board Member

Alexandrina Stoyanova, University of Barcelona

Board Member

Matt Sutton, University of Manchester

Finance Committee Member

Robert Elliot, University of Aberdeen

Finance Committee Member

Céu Mateus, Lancaster University

Registration desk

Participants can collect conference materials at the registration desk in the lobby of the Main Building of the University of Hamburg (ESA), Edmund-Siemers-Allee 1.

The registration desk is open at the following times:

- Wednesday 13 July: 8:00 am to 7:00 pm
- Thursday 14 July: 8:00 am to 6:00 pm
- Friday 15 July: 8:00 am to 6:00 pm
- Saturday 16 July: 8:00 am to 12:00 pm

Poster sessions

Poster sessions will take place during lunch from 12:00 pm to 1:00 pm on Thursday 14 July and from 12:30 pm to 1.30 pm on Friday 15 July. The posters are exhibited on the third floor in the Main Building of the University of Hamburg (ESA), Edmund-Siemers-Allee 1.

Lunch and refreshments

Lunch and coffee refreshments will be provided in the lobby areas on the first and second floors of the Main Building (ESA), and on the first floor of the ESA Ost and ESA West buildings.

Name badges

Participants are requested to wear the official conference name badges at all conference events. A replacement fee will be charged for lost badges.

Internet Access on Campus

During the conference you can access the internet in all campus buildings through the university’s wifi network by using the SSID “GUEST”. You will receive a personal username and password along with a user guide as part of your conference materials. Access to Eduroam is also available.

Certificate

All participants will receive a certificate of attendance during the conference as part of the conference materials.

No smoking policy

Smoking is prohibited in all indoor conference areas. Smoking is only permitted outside and in designated smoking areas.

First aid

The first aid room is located on the right side of the lobby (first floor) of the Main Building of University of Hamburg (ESA), Edmund-Siemers-Allee 1. The emergency phone number is 112. You can call this number free of charge from any phone, including foreign mobile phones, without any area code.

Liability

By registering at the conference, participants agree that the organizing committee does not assume any responsibility for damage or injuries to persons or property during the conference. Participants are advised to organize their own health, travel and personal insurances

GUIDELINES FOR SESSIONS

All sessions are 1 hour and 30 minutes long. If you are part of an organized session, the session organizer and session chair might give you different guidelines or duties, please contact them if you have any questions. Oral sessions will have 4 abstracts (for 4 abstracts each presenter will have 15 minutes and there will also be 30 minutes total for questions).

CHAIR DUTIES

- Preside at the sessions
- Carefully manage time use of the session. Limit each presenter strictly so that the final presenter is not short-changed, and use left over time for discussion or questions from the floor
- Notify the room staff if any problem should arise during the session (lights, noise, etc.)
- Thank all of the presenters and participant

Chairs should go to the session room at least 10 minutes prior to the start of the session and introduce themselves to the presenters, check the facilities, slides, projection, etc. If there are any issues to resolve, notify the room staff or congress desk.

PRESENTATION GUIDELINES

Presentations should be submitted at the latest 10 minutes before the start of the session beginn in the session room to the room staff. Slides can be Powerpoint (.ppt or .pptx) or PDF (recommended if you have lots of mathematical formulae).

POSTER GUIDELINES

We recommend that posters fit within a 84,1 x 118,9 cm area (DIN Ao format).

Public Transport

- Please consider the following costs for travel tickets:

- ❖ Single Ticket Greater Hamburg Area (one way ticket): €3.20
9:00 am Day Ticket* Greater Hamburg Area: €6.20
- ❖ 9:00 am Group Day Ticket* Greater Hamburg Area (up to 5 persons of any age): €11.20

- Please ensure that you enter the bus at the front entrance and have your ticket ready for occasional controls.

**Ticket is valid on Mondays to Fridays from 0:00 am to 6:00 am and from 9:00 am to 6:00 am the following morning. Ticket is valid all day on Saturday, Sunday and public holidays.*

Getting to the University

Taxi

A taxi from the main train station (Hauptbahnhof) to the University will take approximately 15 minutes. There is a taxi rank outside the station. Note that it will be quicker and cheaper to take a S-Bahn (urban rail) to Dammtor train station (see below). A taxi from the airport to the University will take approximately 30 minutes. There is a taxi rank outside the airport. You can also reach the University by public transport taking a S-Bahn (urban rail) (see below).

Rail

Main train station, Hamburg Hauptbahnhof (Hbf) → University of Hamburg

- At Hamburg Hauptbahnhof (Hbf) go to platform 2 and board either train **S21** in the direction of Elbgastrasse or train **S31** in the direction of Altona.
- Exit the train at Dammtor
- Follow the blue highlighted route to the university:



Air

Hamburg Airport → University of Hamburg

- In the airport, follow the signs **S1** to the nearest entrance of the Hamburg Airport train station.
- Once on the platform, board train **S1** in the direction of Ohlsdorf.
- At Ohlsdorf, exit the train and follow the signs for **U1**. Board train **U1** in the direction of Farmsen. Exit the train at Stephansplatz.
- Follow the signs towards Universität Hamburg and exit the train station.
- Follow the blue highlighted route to the university:



SOCIAL PROGRAM





SOCIAL PROGRAM

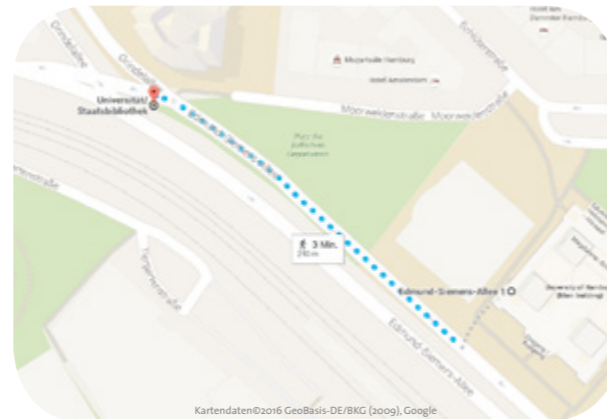
Opening reception in the Hamburg City Hall, Wednesday 13 July 2016, 7:00 pm – 9:00 pm

The opening reception will take place in the Hamburg City Hall (Hamburg Rathaus). Please ensure that you take your invitation letter with you, which you will have received as part of the conference documents at the registration desk. If you are unable to register for the conference, please ensure that you have your ID or passport with you when going to the Hamburg City Hall.

Public Transport

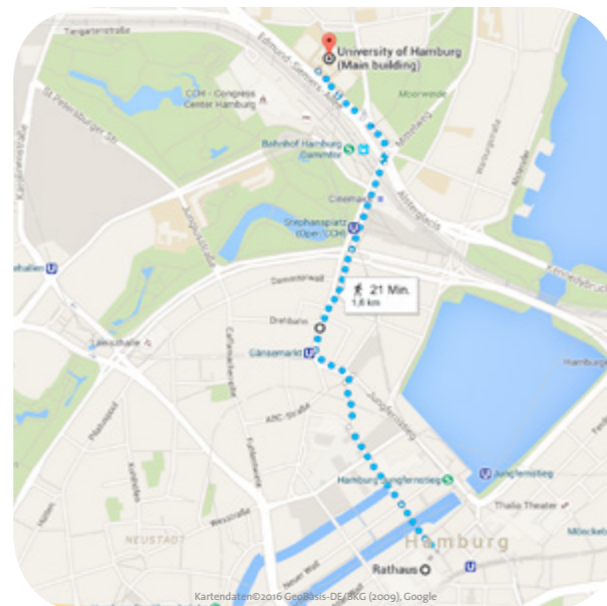
University of Hamburg → Hamburg City Hall

- Exit the Main Building (ESA) and follow the blue highlighted route to the bus station:
- Take bus  or  in the direction of **Hauptbahnhof / ZOB**.
- Exit the bus at Rathausmarkt. From there you will see the Hamburg City Hall and the entrance is a two-minute walk away. EuHEA 2016 students will be waiting at **Rathausmarkt** to provide directions.



By foot

You can also go by foot to the Hamburg City Hall from the university by following the green line. The journey will take approximately 20 min (1.6 km).



SOCIAL PROGRAM

EuHEA Conference 2016 evening event aboard the Cap San Diego, Friday 15 July 2016, 7:00 pm – 12:00 pm





The evening event will take place aboard the Cap San Diego, the largest museum cargo ship in the world, built in 1961 and formerly known as the "White Swan of the South Atlantic." Given that the Cap San Diego is a real ship with many steps, we advise you to wear comfortable footwear.

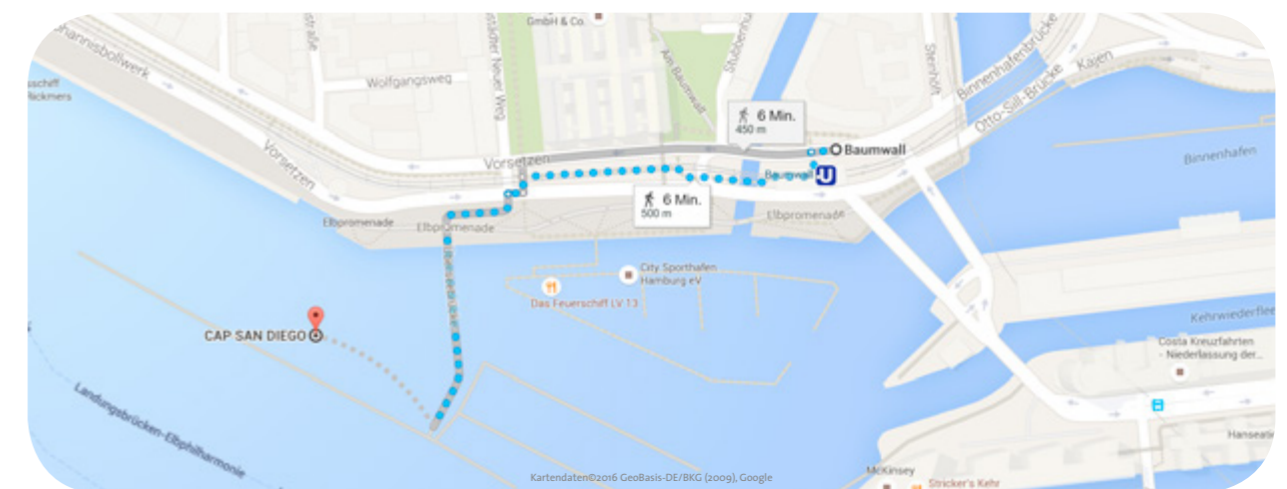
Two guided departures to the Cap San Diego on foot will be organized. The groups will leave at **6:20 pm** and **6:40 pm** from the registration desk (ESA). The walk will take approximately **30 min** to the Cap San Diego. The route will pass by other pleasant locations in the city, namely through the *Planten un Blomen park* and the *Laeiszhalle*, providing a wonderful opportunity to experience Hamburg.

Public Transport

University of Hamburg → Cap San Diego

Exit the main building of the university. Follow the green highlighted route to the train station **Dammtor**:

- Take train  in the direction of **Elbgaustraße** or  in the direction of **Blankenese**. Exit the train at **Sternschanze**. Leave the platform and follow the directions to .
- Board train  in the direction of **Hauptbahnhof Süd - Wandsbek-Gartenstadt** and exit the train at **Baumwall**. EuHEA 2016 students will be waiting to guide you to the Cap San Diego.
- Exit the train station and follow the blue highlighted route to the Cap San Diego:



PLENARY SPEAKERS

First Plenary: “How should we reflect a range of criteria in resource allocation decisions?”



Mark Sculpher is Professor of Health Economics and Director of the Programme on Economic Evaluation and Health Technology Assessment in the Centre for Health Economics at the University of York. He is also deputy director of the UK Department of Health-funded Policy Research Unit in Economic Evaluation of Health and Care Interventions, and a Senior Investigator for the National Institute for Health Research. He is a former president of the International Society for Pharmacoeconomics and Outcomes Research.

Previously, Mark Sculpher worked at Brunel University and was a Visiting Professor at McMaster University in Canada. He was a member of the NICE Technology Appraisal Committee 2004 – 2008, the NICE Public Health Interventions Advisory Committee 2006 – 2009 and is currently a member of the NICE Diagnostic Advisory Committee. He was a member of the Commissioning Board for the UK NHS Health Technology Assessment Programme (2007 – 2010) and the UK Medical Research Council’s Methodology Panel.

Mark Sculpher’s research has focused on normative frameworks for economic evaluation and their application. He has contributed to the health economics community with over 200 publications and is co-author of “Methods for the Economic Evaluation of Health Care Programmes” (with Drummond et al, 4th edition, OUP, 2015) and “Decision modelling for Health economic evaluation” (with Briggs and Claxton, OUP, 2006).

Second Plenary: “Complementary health insurance and regulation of health care systems”



Brigitte Dormont is Professor at the University of Paris Dauphine (PSL Research University), where she teaches econometrics and health economics. She was formerly Professor at the University of Orleans (1990-1992) and the University of Paris-Nanterre (1992-2005). She was also Visiting Professor at the University of Lausanne (2002-2009).

Brigitte Dormont is currently Director of the LEGOS Research Center (*Laboratoire d’économie et de gestion des organisations de santé* - Laboratory of Economics and Management of Health Organizations), holder of the Health Chair (Louis Bachelier Institute), as well as Co-Director of the Public Economics and Redistribution Program at the CEPREMAP Research Center.

Her research focuses on regulation of health care systems and deals with topics such as supply induced demand, physicians’ incomes, hospital payment systems, regulation of health insurance, ageing and health expenditure growth. Her work has been published in many academic journals and several books. Brigitte Dormont is currently Associate Editor of *Health Economics* and a member of the editorial boards of several French economics journals.

Brigitte Dormont has been a member of the French High Council for the Future of Health Insurance (HCAAM) since 2011, and of the French committee on national health accounts (*Commission des comptes de la Santé*) since 2001. She was a member of the French Council of Economic Analysis (*Conseil d’analyse économique*) (2012-2016), an advisory body that reports to the French Prime Minister.

Closing Plenary: “Know the ropes: financial barriers in access to health care”



Pedro Pita Barros is current president of the European Health Economics Association (EuHEA) and professor of Economics at Universidade Nova de Lisboa. He is currently Vice-Rector of Universidade Nova de Lisboa. Other current positions: member of the Advisory Council of Statistics Portugal, vice-president of the Institute for Public Policies Thomas Jefferson - Correia da Serra, President of the Commission for Reform of Civil Servants health protection system (by Government appointment), member of the National Council of Ethics for Life Science (by Government appointment). Past positions include member of the European Commission’s “Expert panel on effective ways of investing in health” (2013-2016), Member of the Board of the Portuguese Energy Regulator (2005/2006), President of the Portuguese Association of Health Economics, and on the Governmental Commission for the Financial Sustainability of the National Health Service (2006/2007). He has been awarded with the honorary decorations - Grande-Oficial da Ordem do Infante D. Henrique, awarded by the President of the Republic of Portugal, and Gold Medal for Distinctive Services by the Health Ministry of Portugal.

Pedro Pita Barros’ research focuses on issues on health economics and on regulation and competition policy. His work has covered different topics including: health expenditure determinants, health systems design, waiting lists, bargaining in health care, competition policy in Portugal and in the European Union, among others. His research has appeared in many academic journals. Over time he has acted as consultant for both private and public entities, in Portugal and at the European level, in the areas of health economics, competition policy and economic regulation.

PROGRAM

.....

Wednesday, July 13

Thursday, July 14

08:00 am - 06:30 pm	REGISTRATION OPEN	
09:00 am - 12:00pm	PRE-CONFERENCE WORKSHOPS	
	Using Stated Preference Methods to Guide Health Policy: Challenges, Pitfalls and Research Agendas <i>Dorte Gyrd-Hansen, COHERE, Department of Business and Economics & Department of Public Health, University of Southern Denmark</i>	121 ESA West
	Data Visualisation and Health Econometrics <i>Andrew Michael Jones, University of York</i>	122 ESA West
	Measuring the Impact of Biomedical Innovation on Longevity, Health, and Medical Expenditure <i>Frank Lichtenberg, Columbia University and National Bureau of Economic Research</i>	220 ESA West
	Paying Providers <i>Mathias Kifmann, Hamburg Center for Health Economics, University of Hamburg</i>	222 ESA West
12:00 pm - 01:00 pm	COFFEE BREAK	ESA / ESA Ost/West
01:00 pm - 04:00pm	PRE-CONFERENCE WORKSHOPS	
	KPMG Satellite Symposium: „How Can Different Stakeholders in the Health Sector be Better Aligned?“ <i>Mark Britnell, Chairman & Partner of KPMG’s Global Health Practice; Reihard Busse, Technical University of Berlin; Luke Slawomirski, Organisation of Economic Cooperation and Development (OECD); Peter Smith, Imperial College London</i>	221 ESA West
	Introduction to Medical and Economic Decision Analysis (Decision-Analytic Modeling) <i>Beate Jahn, UMIT - Private Universität für Gesundheitswissenschaften, Medizinische Informatik und Technik GmbH</i>	120 ESA West
	Competition in Health Care Markets <i>Luigi Siciliani, University of York</i>	121 ESA West
	The Economics of Risky Health Behaviour <i>Thomas Siedler, Hamburg Center for Health Economics, University of Hamburg</i>	122 ESA West
07:00 pm - 09:00 pm	OPENING RECEPTION IN THE HAMBURG CITY HALL	

08:00 am	REGISTRATION OPEN	
09:00 am - 10:00 am	FIRST PLENARY	Lecture hall A
	How should we reflect a range of criteria in resource allocation decisions? <i>Mark Sculpher, University of York</i>	
10:00 am - 10:30 am	COFFEE BREAK	ESA / ESA Ost/West
10:30 am - 12:00 pm	ACCESS TO CARE	ESA Ost 222
	Chair: Eline Aas, University of Oslo	
	Informal caregiving and subjective well-being - evidence of a population-based longitudinal study of older adults in Germany <i>André Hajek, Hamburg Center for Health Economics, University Medical Center Hamburg-Eppendorf</i>	
	Corruption and the Physician-Patient Relationship - The Influence of Reciprocity <i>Vanessa Hilleringmann, University of Paderborn</i>	
	Regional variations in hospital admissions due to ambulatory care sensitive conditions (ACSC) in Austria: an exploration of the socioeconomic gradient on preventable health care <i>Anna-Theresa Renner, Austrian Public Health Institute</i>	
	Does social capital and general health affect cancer severity at the time of diagnosis and five years mortality? <i>Eline Aas, University of Oslo</i>	
10:30 am - 12:00 pm	ALTERNATIVE METHODS IN HEALTH TECHNOLOGY ASSESSMENT	ESA West 221
	Chair: Eva Chih-Hsien Liao, National Taiwan University	
	Patient-level heterogeneity in the cost-effectiveness of total joint replacement surgery: The value of stratified decisions in the ACHE study <i>Peter Eibich, University of Oxford</i>	
	The impact of technology diffusion in healthcare markets – Evidence from heart attack treatment <i>Ansgar Wübker, RWI – Leibniz Institute for Economic Research</i>	
	The assessment of the cost-effectiveness of early intensive treatment in patients with type 2 diabetes: An example for a ‘qualitative’ iterative approach of economic evaluation <i>Michael Laxy, Institute of Health Economics and Health Care Management, Helmholtz Zentrum München</i>	
	An application of the maximum acceptable incremental cost (MAIC) of an immediate life-saving intervention for modifying the reimbursement indications under the National Health Insurance <i>Eva Chih-Hsien Liao, National Taiwan University</i>	

10:30 am - 12:00 pm	ANALYSIS OF HEALTH INSURANCE DATA <i>Chair: Sarah Hofmann, WifOR</i>	ESA Ost 120
	Can we measure quality of primary care using using health insurance claims data? <i>Eva Blozik, Department of Health Sciences, Helsana Health Insurances</i>	
	Impact of GP-centered health care in Thuringia, Germany: A case-control study <i>Janine Biermann, University of Duisburg-Essen</i>	
	Status and perspectives of health economic claims data analyses in Germany – A systematic review <i>Kristine Kreis, Center for Health Economics Research Hannover (CHERH), Leibniz University of Hannover</i>	
	Evaluation of physician-centered gatekeeping in Germany – Short-term impacts on patients’ health care utilization, the quality of primary care, and expenditures <i>Sarah Hofmann, WifOR</i>	

10:30 am - 12:00 pm	BEHAVIORAL EXPERIMENTS IN HEALTH <i>Chair: Matteo M. Galizzi, ESRC Future Research Leader Fellow at London School of Economics</i>	ESA West 122
	How well do consumers choose health insurance? An experiment <i>Nadja Kairies-Schwarz, University of Duisburg-Essen</i>	
	Stability, cross-validity, and external validity of risk preferences measures: Experimental evidence from a UK representative survey <i>Sara R. Machado, Boston University</i>	
	Physician performance pay: Evidence from a laboratory experiment <i>Jeannette Brosig-Koch, University of Duisburg-Essen</i>	
	Referrals in health care markets <i>Daniel Wiesen, University of Cologne</i>	

10:30 am - 12:00 pm	CHILD HEALTH <i>Chair: Mathias Schumann, Hamburg Center for Health Economics, University of Hamburg</i>	ESA Ost 221
	Health and skill formation in early childhood <i>Pietro Biroli, University of Zurich</i>	
	The effects of a universal child care reform on child health - Evidence from Sweden <i>Bettina Siflinger, University of Mannheim</i>	
	The youngest get the pill: ADHD misdiagnosis and the production of education in Germany <i>Amelie Wuppermann, LMU Munich</i>	
	Unlucky to be young? The effect of school peers on health and health-related behavior in the long run <i>Mathias Schumann, Hamburg Center for Health Economics, University of Hamburg</i>	

10:30 am - 12:00 pm	COMPETITION POLICY IN THE HEALTH SECTOR IN FIVE EUROPEAN COUNTRIES <i>Chair: Luigi Siciliani, University of York</i>	ESA West 222
	Netherlands <i>Erik Schut & Marco Varkevisser, Erasmus University Rotterdam</i>	
	Norway <i>Kurt Richard Brekke, Norwegian School of Economics Bergen</i>	
	Germany <i>Mathias Kifmann, Hamburg Center for Health Economics, Universität Hamburg</i>	
	Portugal <i>Pedro Pita Barros, Universidade Nova de Lisboa</i>	
	France and overview of policy lessons <i>Luigi Siciliani, University of York</i>	

10:30 am - 12:00 pm	COSTS AND BENEFITS OF TREATMENT WITH PHARMACEUTICALS <i>Chair: Tom Stargardt, Hamburg Center for Health Economics, University of Hamburg</i>	ESA West 120
	Real-world treatment cost of metastatic colorectal cancer (mCRC) patients in Germany with known RAS status <i>Andrea Lebioda, Amgen GmbH</i>	
	Stratified cost-effectiveness analysis versus value-based prices when patients are heterogeneous <i>Paolo Pertile, University of Verona</i>	
	Estimating the benefits of cancer treatments <i>Margaret Kyle, MINES ParisTech</i>	
	Health benefit assessment of pharmaceuticals: An international comparison of decisions from Germany, England, Scotland and Australia <i>Tom Stargardt, Hamburg Center for Health Economics, University of Hamburg</i>	

10:30 am - 12:00 pm	DYNAMIC MODELS OF HEALTH AND LONGEVITY <i>Chair: Paolo Nicola Barbieri, University of Gothenburg</i>	Lecture hall K
	A theory of education, health and longevity <i>Kristian Bolin, Centre for Health Economics, University of Gothenburg</i>	
	Aging and longevity over an infinite time horizon <i>Davide Dragone, University of Bologna</i>	
	The economics of health demand and human aging: Health capital vs. health deficit <i>Holger Strulik, University of Goettingen</i>	
	Medical care within an OLG economy with realistic demography <i>Ivan Frankovic, Vienna Institute of Demography</i>	

10:30 am - 12:00 pm **END-OF-LIFE EXPENDITURES** *ESA Ost 123*
Chair: Claudia Geue, University of Glasgow

Transitions between health care settings and its associated costs in the last six months of life in Switzerland
Caroline Bähler, Department of Health Sciences, Helsana Group

Costs of formal and informal care in the last year of life for patients in receipt of specialist palliative care
Aoife Brick, Economic and Social Research Institute

Palliative care under a health economic perspective – Evidence from Germany
Cornelius Plaul, TU Dresden

Determinants of healthcare expenditure at the end of life for cancer patients in Scotland
Claudia Geue, University of Glasgow

10:30 am - 12:00 pm **HEALTH SECTOR, QUALITY AND SELF-CARE** *Lecture hall H*
Chair: Herwig Ostermann, Austrian Public Health Institute

The economic footprint of the German health economy
Marion Cornelia Schwärzler, WifOR GmbH

Two-sided matching in physician-insurer networks: Evidence from medicare advantage
Kathleen Nosal, University of Mannheim

Review on quality transparency: Measuring, reporting and rewarding quality of hospital care in five nations
Christoph Pross, Berlin University of Technology, Department of Health Care Management

A cost/benefit analysis of self-care initiatives in the European Union – who’s better off, who’s worse off?
Herwig Ostermann, Austrian Public Health Institute

10:30 am - 12:00 pm **HEALTH TECHNOLOGY ASSESSMENT OF MEDICAL DEVICES: WHICH WAY FORWARD? KEY RECOMMENDATIONS FROM THE EU MEDTECHTA PROJECT** *ESA West 121*
Chair: Rosanna Tarricone, Department of Policy Analysis and Public Management, Bocconi University

The role of learning in the health technology assessments of medical devices
Yauheniya Varabyova, Hamburg Center for Health Economics, Universität Hamburg

Methods for comparative effectiveness research of medical devices: bias modeling in evidence synthesiss
Beate Jahn, UMIT - University for Health Sciences, Medical Informatics and Technology, Hall i.T.

Improving the HTA of medical devices: recommendations from the MedtechTA project
Michael F. Drummond, Centre for Health Economics, University of York

10:30 am - 12:00 pm **HOSPITAL COST, PRODUCTIVITY AND QUALITY** *ESA Ost 122*
Chair: Christian Buennings, University of Paderborn / RWI – Leibniz Institute for Economic Research

Time-driven activity-based costing in healthcare: a systematic review of the literature
George Keel, Karolinska Institutet, Stockholm

Does performance pay increase productivity? Evidence from a German University Hospital
Oliver Unger, Julius-Maximilians-Universität Würzburg

Nurse staffing patterns and patients’ perceptions of quality: An empirical analysis of U.S. hospitals
Eva-Maria Oppel, Hamburg Center for Health Economics, University of Hamburg

The relationship between nursing staffing levels and hospitals' quality: A panel study for Germany
Christian Buennings, University of Paderborn /RWI – Leibniz Institute for Economic Research

10:30 am - 12:00 pm **INSURANCE AND MEDICAL CARE USE** *ESA West 220*
Chair: Eline van den Broek, University of Colorado Anschutz Medical campus

The impact of community-based health insurance on utilizations of medically trained healthcare providers among informal workers in Bangladesh
Sayem Ahmed, International Centre for Diarrhoeal Disease Research

Changing public healthcare eligibility and the utilisation of GP services by children in Ireland
Anne Nolan, Economic and Social Research Institute, Dublin

Effects of urban employees basic medical insurance on hospital care utilization and financial protection in China
Tingting Qu, Sun Yat-sen University

The effect of restrictions on provider access in health plans on total health care expenditure
Eline van den Broek, University of Colorado Anschutz Medical campus

10:30 am - 12:00 pm **THE EFFECT OF FINANCIAL INCENTIVES IN THE CO-ORDINATION OF HEALTH CARE** *ESA Ost 121*
Chair: Karin Monstad, University of Bergen

Implementing a fee to reduce bed-blocking in hospitals: a register based study of effects on length of stay, readmission rates and mortality
Terje P. Hagen, Uni Research

Primary care capacity and utilization of specialized health care
Tor Iversen, Uni Research

Municipal co-financing of medical hospital patients
Oddvar Kaarbøe, University of Oslo

Does emergency bed capacity in primary care effect emergency hospital admissions?
Kamrul Islam, Uni Research

12:00 pm - 01:00 pm	LUNCH / POSTER SESSIONS	ESA / ESA Ost/West ESA 3 floor
01:00 pm - 02:30 pm	AGING, HEALTH AND PREVENTION <i>Chair: Lara Gitto, University of Roma "Tor Vergata"</i> Retirement, time costs and uptake of cancer screening <i>Peter Eibich, University of Oxford</i> Long-term evaluation of the Bavarian Fall Prevention Program in nursing homes <i>Claudia Schulz, Hamburg Center for Health Economics, University Medical Center Ham- burg-Eppendorf</i> Economic evaluation of health promotion activities for older people – conceptual questions <i>Kai Huter, SOCIUM - Research Center on Inequality and Social Policy, University of Bremen</i> Adult education and its impact on quality of life: a case study <i>Lara Gitto, University of Roma "Tor Vergata"</i>	ESA Ost 221
01:00 pm - 02:30 pm	CHILDHOOD CONDITIONS AND HEALTH <i>Chair: Sebastian Wichert, LMU Munich</i> The lasting legacy of seasonal influenza: In-utero exposure and human capital develop- ment <i>Hannes Schwandt, University of Zurich</i> The determinants of infant health: Does prenatal care influence pregnancy outcomes? The case of using IFLS data <i>Henri Wahyuni, Universitas Gadjah Mada</i> The gender-specific effects of economic conditions at birth on adult biomarkers associated with cardiovascular disease risk <i>Laura Viluma, University of Groningen</i> Birth in Times of War - Evidence on selective fertility and the health-wealth gradient using historical clinical records <i>Sebastian Wichert, LMU Munich</i>	ESA Ost 222
01:00 pm - 02:30 pm	COORDINATION IN HEALTH CARE SYSTEM PERFORMANCE <i>Chair: Oliver Groene, OptiMedis AG / London School of Hygiene and Tropical Medicine</i> Coordinating mechanisms in primary care - the impact of structural and relational factors on patients perceptions of care coordination problems <i>Ines Weinhold, WIGz, Leipzig</i> Improving indicators for monitoring health system performance <i>Maria M. Hofmarcher-Holzhaecker, Health System Intelligence, Medical University of Vienna</i> Public reporting of surgeon level outcomes to improve patient choice in the English NHS: an agenda fit for purpose? <i>Oliver Groene, OptiMedis AG / London School of Hygiene and Tropical Medicine</i>	Lecture hall H

01:00 pm - 02:30 pm	DETERMINANTS OF EFFICIENCY <i>Chair: Richard Heijink, RIVM</i> Investigating efficiency in health care production: the roles of health care administrations and providers <i>Laura Anselmi, Manchester Centre for Health Economics</i> How does hospitalisation affect medication changes: an exploratory study <i>Eva Blozik, Department of Health Sciences, Helsana Health Insurances</i> Care pathways of patients hospitalized for stroke using a sequence analysis <i>Damien Bricard, Irdes</i> The impact of lifestyle on healthcare system efficiency <i>Richard Heijink, RIVM</i>	ESA Ost 120
01:00 pm - 02:30 pm	ECONOMIC EVALUATIONS IN INTERNAL MEDICINE <i>Chair: Elena Pizzo, University College London</i> Cost-effectiveness of telemedicine intervention for patients with COPD <i>Florian Hofer, Hamburg Center for Health Economics, University of Hamburg</i> Are drug-coated balloons cost-effective for femoropopliteal occlusive disease? A compari- son of bare metal stents and uncoated balloons with regard to the target lesion revascular- ization rate <i>Thomas Poder, UETMIS and Centre de Recherche du CHUS, CIUSSS de l'Estrie - CHUS</i> Economic evaluation of complete versus lesion-only revascularisation in patients undergo- ing primary percutaneous coronary intervention for STEMI and Multivessel Disease <i>Lisa Irvine, University of East Anglia</i> Cost-utility analysis of mechanical thrombectomy in acute ischemic stroke in Italy <i>Elena Pizzo, University College London</i>	ESA West 221
01:00 pm - 02:30 pm	ECONOMICS OF PHARMACEUTICAL MARKETS <i>Chair: Katharina Fischer, Hamburg Center for Health Economics, University of Hamburg</i> Whom to serve and whom to obey – an analysis of dispensing behavior <i>Dennis Guhl, Hamburg Center for Health Economics, University of Hamburg</i> Direct and mediated impacts of pharmaceutical policies on firms' performance <i>Claudio Jommi, Department of Pharmaceutical Sciences, Università del Piemonte Orientale, Novara</i> The Role of Physician Behavior in the Opioid Epidemic <i>Molly Schnell, Princeton University</i> Has pharmaceutical innovation increased medication adherence? <i>Katharina Fischer, Hamburg Center for Health Economics, University of Hamburg</i>	ESA West 120

01:00 pm - 02:30 pm **FINANCES, FEES AND HEALTH** *ESA Ost 121*
Chair: Sandra Pellet, Paris Dauphine University

Food is not enough: applying a new measure of financial protection for middle and high income countries to the German context
Martin Siegel, Technische Universität Berlin, BerlinHECOR

The extent of equity in out-of-pocket health payments in Turkey
Zeynep Ökem, Department of International Entrepreneurship, TOBB University of Economics and Technology

Financing equity and out-of-pocket payments under the health care reforms in Turkey
Seher Nur Sulku, Gazi University

The determinants of equity in healthcare access in Tajikistan: the role of migrants' remittances
Sandra Pellet, Paris Dauphine University

01:00 pm - 02:30 pm **HEALTH EXPENDITURE GROWTH AND REGIONAL VARIATION** *ESA Ost 123*
Chair: Carsten Colombier, Federal Finance Department

What explain the regional variation in health expenditure?: A comparative analysis of Indian states
Shailender Kumar, Institute for Studies in Industrial Development (ISID), New Delhi

A disease-based approach: the key to unravel regional variation in health care spending?
Eline de Vries, Tilburg University

Historical health expenditure of the BRICS nations and future forecasts to 2025
Mihajlo (Michael) Jakovljevic, University of Kragujevac Faculty of Medical Sciences, Kragujevac

What drives public healthcare expenditure growth? Evidence from Swiss cantons, 1970-2012+
Carsten Colombier, Federal Finance Department

01:00 pm - 02:30 pm **HOSPITAL ORGANIZATION AND PERFORMANCE** *ESA Ost 122*
Chair: Silvana Robone, University of Insubria

Treatment decisions and hospital organization: Do owner and type of ownership matter? An analysis of the choice of TAVI for patients with aortic stenosis
Udo Schneider, WINEG

Board characteristics, boards' strategic priority setting and hospital performance: An empirical analysis in German hospitals
Andrea Thiel, Hamburg Center for Health Economics, University of Hamburg

Austerity and changing logics in performance management: leadership and relational coordination in public hospitals
Teresa Oliveira, Faculdade Economia - Univ. Coimbra

How do hospital-ward characteristics influence health system responsiveness? An empirical evaluation of in-patient care in the Italian region of Emilia-Romagna
Silvana Robone, University of Insubria

01:00 pm - 02:30 pm **INSURANCE DEDUCTIBLES AND COPAYMENTS** *ESA West 220*
Chair: Cornel Kaufmann, University of Lucerne

Rebate versus deductible: Do they have the same effect on health consumption?
Minke Remmerswaal, CPB Netherlands Bureau for Economic Policy Analysis, Tilburg University the Netherlands

The effect of copayments introduction in the Czech Republic
Michal Horný, Boston University School of Public Health

How forward-looking are individuals?
Arthur Hayen, Tilburg University / RIVM

Risk preferences and deductible choice: Evidence from the mandatory Swiss Health Insurance
Cornel Kaufmann, University of Lucerne

01:00 pm - 02:30 pm **ISSUES FOR ECONOMIC EVALUATION IN DENTAL CARE** *ESA West 121*
Chair: Steve Birch, Centre for Health Economics at the University of Manchester

Using DCEs to estimate willingness to pay for dental care
Dwayne Boyers, University of Aberdeen

Economic evaluation of oral health promotion: challenges in measuring and valuing the avoidance of tooth decay and gum disease
Joanne Lord, University of Southampton

The cost-effectiveness of caries prevention among children
Ciaran O'Neill, National University of Ireland - Galway (NUIG)

The challenges and future of valuing outcomes in dentistry
Jing Shen, Newcastle University

01:00 pm - 02:30 pm **PRACTICE STYLES AND HOSPITAL BEHAVIOR** *ESA West 222*
Chair: Thomas Schober, Johannes Kepler University Linz

Differences in nulliparous caesarean section rates across models of care: A decomposition analysis
Aoife Brick, Economic and Social Research Institute

The impact of sanction fear on prosocial intentions using the example of clinical training
Alfred Angerer, ZHAW Zurich University of Applied Sciences

Human resources behind hospital production – Empirical evidence from a Portuguese hospital center
Sofia Cruz Gomes, FEUP

Explaining variations in health care expenditures – What is the role of practice styles?
Thomas Schober, Johannes Kepler University Linz

01:00 pm - 02:30 pm	PREFERENCES <i>Chair: Michael Schlander, University of Heidelberg & Institute for Innovation & Valuation in Health Care (InnoVal-HC)</i> Eliciting preferences for clinical follow-up in head and neck cancer patients using best-worst scaling <i>Michela Meregaglia, CeRGAS (Research Centre on Health and Social Care Management), Università Bocconi; London School of Hygiene and Tropical Medicine</i> Do respondents do as they say?-A mixed method investigation of the external validity of discrete choice experiment <i>Gin Nie Chua, University of Aberdeen</i> Does it matter to analyse preferences at the individual level? Evidence from a choice experiment about chronic pain self-management <i>Nicolas Krucien, University of Aberdeen</i> Estimating the social value of health technologies: The European “Social Preference Measurement Study” Project <i>Michael Schlander, University of Heidelberg & Institute for Innovation & Valuation in Health Care (InnoVal-HC)</i>	ESA West 122
---------------------	---	--------------

01:00 pm - 02:30 pm	TIME PREFERENCES AND HEALTH <i>Chair: Dorte Gyrd-Hansen, COHERE, Department of Business and Economics & Department of Public Health, University of Southern Denmark</i> Discounting for health and money: a field experiment using the direct method <i>Arthur Attema, Erasmus University Rotterdam</i> Different domains – different time preferences? Is preventive health behavior best explained by discounting based on money or health outcomes? <i>Morten Raun Mørkbak, University of Southern Denmark</i> Can we improve the measurement of time preference to enhance predictive validity of health behaviours? <i>Marjon van der Pol, University of Aberdeen</i>	Lecture hall K
---------------------	--	----------------

02:30 pm - 02:45 pm	COFFEE BREAK	ESA / ESA Ost/West
02:45 pm - 04:15 pm	COMPARATIVE STUDIES OF HEALTH AND HEALTH CARE FOR THE ELDERLY <i>Chair: France Weaver, James Madison University</i> What explains the difference in the effect of retirement on health?: Evidence from global aging data <i>Yoshinori Nishimura, The University of Tokyo</i> Futile or life-saving? AMI treatment intensity and outcomes among the elderly in Norway & The United States <i>John Hsu, Harvard Medical School</i> Systematic review of economic studies on deep brain stimulation for Parkinson's Disease <i>Luke Connelly, Professor of Health Economics, School of Economics, University of Queensland</i> The importance of health at shaping inequalities in subjective well-being of the baby boomers and elderly in Europe <i>France Weaver, James Madison University</i>	ESA West 222

02:45 pm - 04:15 pm	COST-EFFECTIVENESS ANALYSES AND HEALTH RISK ASSESSMENTS <i>Chair: Katrin Christiane Reber, Hamburg Center for Health Economics, University Medical Center Hamburg-Eppendorf</i> Evaluating the lifetime cost-effectiveness of population health interventions alongside clinical trials: the case of the STRATEGIC trial <i>Apostolos Tsiachrisras, University of Oxford</i> Cost-effectiveness analysis of the tertiary individual prevention (TIP) program for occupational skin diseases <i>Magdalene Eva Krensel, Hamburg Center for Health Economics, University Medical Center Hamburg-Eppendorf</i> Cost-effectiveness of regular versus irregular supportive periodontal therapy or tooth removal <i>Falk Schwendicke, Charité - Universitätsmedizin Berlin, Dpt. of Operative and Preventive Dentistry</i> Refinement of a case finding algorithm for osteoporotic fracture prevention programs <i>Katrin Christiane Reber, Hamburg Center for Health Economics, University Medical Center Hamburg-Eppendorf</i>	ESA Ost 221
---------------------	---	-------------

02:45 pm - 04:15 pm	DETERMINANTS OF HEALTH 1 <i>Chair: Jinhua Li, University of Melbourne</i> How does home ownership affect health and well-being? Evidence from exogenous variations in affordability in the United Kingdom <i>Luke Munford, Manchester Centre for Health Economics</i> Health and subjective well-being: Inquiring into the indirect effects of health through income and social relationships <i>Admassu N Lamu, University of Tromso</i> The causal effect of education on health and health-related behaviours: what can the Australian twins data tell us? <i>Jinhua Li, University of Melbourne</i>	ESA Ost 222
---------------------	---	-------------

02:45 pm - 04:15 pm	ECONOMIC EVALUATIONS OF PREVENTIVE STRATEGIES <i>Chair: Rainer Reile, University of Tartu</i> The cost-effectiveness of pneumococcal vaccination in Estonia <i>Rainer Reile, University of Tartu</i> The cost-effectiveness analysis smoking cessation support program in Turkey <i>Mustafa Kilic, Hta agency</i> Cost effectiveness of a preventative lifestyle intervention for older adults (Lifestyle Matters) <i>Anju Keetharuth, University of Sheffield</i> The cost-effectiveness of HPV vaccination in Estonia <i>Rainer Reile, University of Tartu</i>	ESA West 221
---------------------	--	--------------

02:45 pm - 04:15 pm	ECONOMICS OF R&D <i>Chair: Margaret Kyle, Mines ParisTech</i> Reimbursement of medical technologies: Impact factors on remunerating “new examination- and treatment procedures” in inpatient care <i>Cornelia Henschke, Technische Universität Berlin, Department of Health Care Management</i> Return on investment in adopting translational research <i>Richard Fordham, University of East Anglia</i> Economies of scope and scale in publicly funded biomedical and health research <i>Karla Hernandez-Villafruerte, The Office of Health Economics</i> Free riding in disease research <i>Margaret Kyle, Mines ParisTech</i>	ESA West 120
---------------------	--	--------------

02:45 pm - 04:15 pm	EFFICIENCY ESTIMATION <i>Chair: David G. Lugo-Palacios, London School of Hygiene and Tropical Medicine</i> Optimising investments in Bulgaria’s HIV response <i>Laura Grobicki, University College London</i> How reliable are efficiency estimates from parametric frontier methods? An application to primary care centers in southern Europe <i>Joao Marques-Gomes, Nova School of Business and Economics</i> Are low-value care measures up for the task? A systematic review of the literature <i>Eline de Vries, Tilburg University</i> Length of stay as a resource-use indicator to estimate efficiency in Mexican public hospitals <i>David G. Lugo-Palacios, London School of Hygiene and Tropical Medicine</i>	ESA Ost 120
---------------------	---	-------------

02:45 pm - 04:15 pm	HEALTH BEHAVIOR I: SOCIO-ECONOMICS <i>Chair: Aniko Biro, The University of Edinburgh, Hungarian Academy of Sciences, Corvinus University of Budapest</i> Revisiting the relation between education and smoking <i>Sophie-Charlotte Meyer, University of Wuppertal</i> The acceleration of immigrant unhealthy assimilation <i>Luca Stella, University of Wuppertal</i> Disentangling the gender gap in longevity <i>Timo Trimborn, University of Goettingen</i> Subjective survival probabilities and the education gradient in smoking in Europe <i>Aniko Biro, The University of Edinburgh, Hungarian Academy of Sciences, Corvinus University of Budapest</i>	Lecture hall K
---------------------	--	----------------

02:45 pm - 04:15 pm	HOSPITAL STRATEGY <i>Chair: Johannes Kriegel, University of Applied Sciences Upper Austria, School of Applied Health and Social Sciences</i> The impact of strategy change on hospital performance <i>Vera Winter, Hamburg Center for Health Economics, University of Hamburg</i> Strategic interaction among hospital innovation <i>Christoph Strumann, University of Kiel</i> Patient flow management in AUT and BAY Hospitals <i>Johannes Kriegel, University of Applied Sciences Upper Austria, School of Applied Health and Social Sciences</i> Future topics of strategic hospital management in Austria <i>Johannes Kriegel, University of Applied Sciences Upper Austria, School of Applied Health and Social Sciences</i>	ESA Ost 122
02:45 pm - 04:15 pm	IMPROVING HEALTH CARE EFFICIENCY THROUGH CLINICAL PRACTICE GUIDELINES: HOW TO ACHIEVE THIS? <i>Chair: Silvia Evers, Maastricht University and Trimbos Institute</i> Short introduction of session <i>Silvia Evers, Maastricht University and Trimbos Institute</i> Presentation 1 <i>Marian Majoie, Maastricht University Medical Center</i> Discussant 1 <i>Subhash Pokhrel, Health Economics Research Group, Brunel</i> Presentation 2 <i>Mickael Hiligsmann, Maastricht University</i> Discussant 2 <i>Manuela Joore, Maastricht University Medical Center</i> Presentation 3 <i>Ghislaine van Mastrigt, Maastricht University</i> Discussant 3 <i>Ken Redekop, Medical Technology Assessment, Erasmus Universiteit Rotterdam</i> Presentation 4 <i>Carmen Dirksen, Maastricht University Medical Center</i> Discussant 4 <i>Ardine de Wit, RIVM& UMCU</i> General debates <i>Silvia Evers, Maastricht University and Trimbos Institute</i>	ESA West 121

02:45 pm - 04:15 pm **INCOME, HEALTH AND INEQUALITIES** *ESA Ost 121*
Chair: Bora Kim, LISER & KU Leuven

Monitoring income-related health differences between regions in Great Britain: a new measurement framework
Paul Allanson, University of Dundee

How important is health for income inequality? A decomposition analysis applied to the occupied Palestinian territory
Maame Esi Woode, INSERM-SESSTIM UMR 912

Inequality in mortality over the life course
Hannes Schwandt, University of Zurich

Inequity in unmet medical need among the European elderly
Bora Kim, LISER & KU Leuven

02:45 pm - 04:15 pm **INSURANCE PLAN CHOICE AND SWITCHING** *ESA West 220*
Chair: Tobias Müller, University of Lucerne

Eliciting preferences for health insurance tariff features: A discrete-choice experiment (DCE)-based survey among young people
York Zöllner, HAW Hamburg

Plan switching and inertia in Medicare Part D: Evidence from administrative data
Amelie Wuppermann, LMU Munich

Switching costs and plan loyalty in subsidized healthcare markets: Medicare part C and plan choice
Adam Atherly, Colorado School of Public Health

Limited attention and health insurance choice: Evidence from an experimental analysis
Tobias Müller, University of Lucerne

02:45 pm - 04:15 pm **PAYING FOR HEALTH CARE AND INEQUALITY** *Lecture hall H*
Chair: Luigi Siciliani, Department of Economics, University of York

Informal payments for health care and service satisfaction in Central and Eastern Europe
Tetiana Stepurko, National University of Kyiv-Mohyla Academy

Highest out-of-pocket health expenditures in France: Profiles of private funded copayments and persistence over time
Aurélie Pierre, Irdes

Socioeconomic inequality in access to healthcare: Do patients’ choices explain the gradient?
Luigi Siciliani, Department of Economics, University of York

Waiting time prioritisation - Evidence from England
Luigi Siciliani, Department of Economics, University of York

02:45 pm - 04:15 pm **PREVENTION AND EXPERIMENTAL HEALTH ECONOMICS** *ESA West 122*
Chair: Simon Binder, University of Augsburg

Healthy/unhealthy breakfast teenagers’ choice: an experiment combining a nutritional training program and the promotion of unhealthy products
Toni Mora, Universitat Internacional de Catalunya

Behavioural change investment through food hygiene education: impact on water quality, sanitation, hygiene and health in rural households of north-western Bangladesh- a Randomized Controlled Trial (RCT) experiment
Mohammad Monirul Hasan, Center for Development Research (ZEF), University of Bonn

Nudging to increase breast cancer screening uptake rate: a randomized experiment
Léontine Goldzahl, Université Paris Dauphine

Risk-taking in vaccination, surgery, and gambling environments – Evidence from a framed laboratory experiment
Simon Binder, University of Augsburg

02:45 pm - 04:15 pm **RETIREMENT AND SAVINGS AMONG THE ELDERLY** *ESA Ost 123*
Chair: Beatriz Rodriguez-Sanchez, University of Groningen

Live fast and die young: Thrifty and healthy enough for the long run?
Yannis Mesquida, University of Lausanne, Faculty of Business and Economics (HEC)

The causal effect of retirement on health care expenditures
Wolfgang Frimmel, Johannes Kepler University Linz

The financial support for long-term elderly care and household savings behaviour
Asako Ohinata, University of Leicester

How related are diabetes and diabetes-related complications with employment in an ageing society? An analysis across Europe in the crisis period 2006 – 2010
Beatriz Rodriguez-Sanchez, University of Groningen

04:15 pm - 04:30 pm **COFFEE BREAK** *ESA West*

04:30 pm - 06:00 pm **BURDEN OF DISEASE IN LOW AND MIDDLE INCOME COUNTRIES** *ESA Ost 122*
Chair: Simon Wieser, Zurich University of Applied Sciences

Economic evaluation of 2014 cholera outbreak in Ghana: A patient level and healthcare system cost analysis in an urban setting
Bernard Bright Kofi Davies-Teye, Drifney Consult Ltd and Ghana Health Service

The financial burden of road traffic injuries in Mozambique: A hospital-related cost-of-illness study of Maputo Central Hospital
Ipshita Prakash, McGill University

Economic evaluation of 2014 cholera outbreak in Ghana: A household cost analysis in high and low incidence settings
Dziedzom Kwesi Awalime, University of Ghana

Societal costs of micronutrient deficiencies in 6-59-month-old children in Pakistan
Simon Wieser, Zurich University of Applied Sciences

04:30 pm - 06:00 pm **DEMAND FOR AND IMPACT OF HEALTHCARE INSURANCE**

ESA West 220

Chair: Reo Takaku, Institute for Health Economics and Policy

Health insurance reform in the United States: Plan choices by low-income enrollees and forfeited subsidies

John Hsu, Massachusetts General Hospital and Harvard Medical School

Does the Private Health Insurance Premium Rebate affect the demand for health insurance by older Australians?

Oleg Yerokhin, University of Wollongong

The effect of an individual mandate on the demand for private health insurance: evidence from a policy reform in Australia using panel data

Terence Cheng, University of Adelaide

Reduced patient cost sharing and the supply-side responses: Evidence from clinic-level data in Japan

Reo Takaku, Institute for Health Economics and Policy, Tokyo

04:30 pm - 06:00 pm **DISEASE MANAGEMENT PROGRAMMES IMPACT ON HEALTHCARE COSTS AND OUTCOMES**

Lecture hall H

Chair: Rachael Hunter, University College London (UCL)

Cost-effectiveness of the German Disease Management Programme (DMP) for Chronic Obstructive Pulmonary Disease (COPD) – A large population-based cohort study

Simon Frey, Hamburg Center for Health Economics, University of Hamburg

Do disease management programs improve health systems responsiveness? – An analysis based on cross-sectional survey data linked with administrative claims data

Julia Röttger, BerlinHECOR, TU Berlin

Does clinical guidelines affect healthcare quality and populational health : Quebec colorectal cancer screening program

Nizar Ghali, Laval university

Impact of centralising acute stroke services in two major cities in England on clinical and cost outcomes: Difference-in-difference analysis using net monetary benefit

Rachael Hunter, University College London (UCL)

04:30 pm - 06:00 pm **DO PROVIDER INCENTIVES WORK?**

ESA West 122

Chair: Seema Kacker, Johns Hopkins University Bloomberg School of Public Health

Continuity of care and pay-for-performance: An old idea showed stronger saving-effect than a new policy

Yu-Ping Wen, Chang Gung University

Should incentives schemes target individual doctors?

Nils Gutacker, Centre for Health Economics, University of York

The motivational effects of changing from a fixed salary to performance based remuneration of Russian physicians

Sergey Shishkin, The National Research University - Higher School of Economics

Providers' willingness to sacrifice earnings for better patient outcomes is associated with higher technical quality of care

Seema Kacker, Johns Hopkins University Bloomberg School of Public Health

04:30 pm - 06:00 pm **ECONOMICS OF PREVENTION**

ESA Ost 221

Chair: Jürgen Maurer, University of Lausanne

Prevention in physician expert markets

Felix Gottschalk, ETH Zurich

The effect of weight-loss on health-care cost: Evidence from a field experiment

Gerald J. Pruckner, Johannes Kepler University of Linz

The causal effects of education on the risk and survival rate of breast cancer

Wei-Der Tsai, Graduate Institute of Industrial Economics, National Central University

Learning to trust flu shots: Quasi-experimental evidence on the role of learning in influenza vaccination decisions from the 2009 influenza A/H1N1 (Swine flu) pandemic

Jürgen Maurer, University of Lausanne

04:30 pm - 06:00 pm **EFFICIENCY IN CLINICAL CHOICES**

ESA Ost 120

Chair: Damien Bricard, IRDES

Efficiency of the implementation of cardiovascular risk management in general practices: an observational study

Eddy Adang, Radboud university medical centre Nijmegen

Do payment incentives hinder doctors' willingness to stop performing surgeries that are proven ineffective? The case of vertebroplasty

Ashley Hodgson, St. Olaf College

A claims data-based comparison of costs and effects of manual compression and vascular closing devices in femoral cardiac catheterization

Julia Walter, Helmholtz Zentrum München

Hospital readmission after heart failure: A multilevel analysis of individual and contextual factors among elderly French patients

Damien Bricard, IRDES

04:30 pm - 06:00 pm **EXTENDING HOURS OF ACCESS TO PRIMARY CARE AND PATIENT SAFETY**

ESA Ost 222

Chair: Chee-Ruey Hsieh, Duke University

Does extending hours of access to primary care affect patient satisfaction? Evidence from the English General Practice Patient Survey

William Whittaker, University of Manchester

Does extending opening hours of primary care practices affect the volume and outcome of hospital emergency care?

Laura Anselmi, Manchester Centre for Health Economics

Is it more dangerous to be admitted to some hospitals than others over the weekend?

Katja Grasic, Centre for Health Economics, University of York

Understanding medical malpractice litigation in China: Why the Chinese are suing hospitals for compensation but beating up their doctors?

Chee-Ruey Hsieh, Duke University

04:30 pm - 06:00 pm **HEALTH AND THE LABOUR MARKET** *ESA West 222*
Chair: Nicolas Ziebarth, Cornell University

Job satisfaction is not enough: How ownership-status related beliefs affect job retention of German medical executives

Florian Liberatore, Zurich University of Applied Sciences

Is there a “Pig Cycle” in the labour supply of doctors? How training and immigration policies respond to physician shortages

Yasser Moullan, University of Oxford

Labor market effects of supply-variation in sick leave durations

Alexander Ahammer, Johannes Kepler University Linz

The pros and cons of sick pay schemes: Testing for contagiouspresenteeism and shirking behavior

Nicolas Ziebarth, Cornell University

04:30 pm - 06:00 pm **HEALTH BEHAVIOR II: THE LABOR MARKET** *Lecture hall K*
Chair: Katrin Zocher, University of Linz Department of Health Economics

The effect of medical marijuana laws on labor market outcomes

Joseph Sabia, San Diego State University & IZA

Your retirement and my health behaviour: Evidence on retirement externalities from a fuzzy regression discontinuity design

Mujaheed Shaikh, Frankfurt School of Finance and Management

Do minimum wages really increase youth drinking and drunk driving?

Joseph Sabia, San Diego State University & IZA

Firms, peers and health behavior

Katrin Zocher, University of Linz Department of Health Economics

04:30 pm - 06:00 pm **HEALTH TECHNOLOGY ASSESSMENT IN SCREENING AND TREATMENT** *ESA West 221*
Chair: Brett Doble, University of Cambridge

Depression screening with patient-targeted feedback in cardiology: Cost-effectiveness analysis of the DEPSCREEN-INFO randomized clinical trial

Christian Brettschneider, Hamburg Center for Health Economics, University Medical Center Hamburg-Eppendorf

Optimal screening participation

Mathyn Vervaart, University of Oslo

Using decision-analytic modelling to estimate the impact of introducing FIT screening at a range of potential cut-off levels in the NHS Bowel Cancer Screening Programme in England

Jacqueline Murphy, University of Oxford

Is value obtainable for precision medicine in the last-line treatment of metastatic lung adenocarcinoma? An early decision analytic model of multiplex targeted sequencing

Brett Doble, University of Cambridge

04:30 pm - 06:00 pm **INEQUALITIES IN DISEASE AND CARE PROVISION** *ESA Ost 121*
Chair: Beatriz Rodriguez-Sanchez, University of Groningen

Macroeconomic variables as determinants of stem cell transplantation differences between regions in a country

Marta Ortega Ortega, Applied Economics Department. School of Economics and Business. University of Granada. Granada

Socioeconomic equity in revascularisations and in survival among acute myocardial infarction (AMI) patients in Finland

Unto Häkkinen, CHESS (Centre for Health and Social Economics) National Institute for Health and Welfare

Patient selection among private for-profit, private non-profit and public hospitals: a register based big data study covering day surgery in Norway

Geir Hiller Holom, University of Oslo

Inequalities in diabetes mellitus prevalence in the elderly across Europe

Beatriz Rodriguez-Sanchez, University of Groningen

04:30 pm - 06:00 pm **ISSUES IN HEALTH TECHNOLOGY ASSESSMENT AND DECISION MAKING** *ESA West 121*
Chair: Ghislaine van Mastrigt, Maastricht University

The chimera of WTP for a QALY: Inconsistencies of stated preferences in scenario variations

Lars Schwettmann, Martin Luther University Halle-Wittenberg

Some views on medical devices effectiveness

Vladimir Rogalewicz, CzechHTA, Faculty of Biomedical Engineering, Czech Technical University in Prague

Opportunity costs and local health service spending decisions: a qualitative study from Wales

Sarah Karlsberg Schaffer, Office of Health Economics

A five step approach to identify relevant outcomes for the development of a patient centered registry for epilepsy in the Netherlands

Ghislaine van Mastrigt, Maastricht University

04:30 pm - 06:00 pm **ISSUES IN LONG-TERM CARE** *ESA Ost 123*
Chair: Edel Walsh, University College Cork

Formal employment and informal care givers – Does working increase the stress factor of informal care givers?

Joana Steinbuck, Universität Witten / Herdecke

Financial effects of the new benefit system in Germany's long-term care insurance

Anke Walendzik, University Duisburg-Essen

The impact of community-based long-term care on quality of life: A production function approach

Julien Forder, University of Kent

The effects of the long-term care benefits on mortality
Helena M Hernández-Pizarro, Pompeu Fabra University (UPF) & CRES

An economic costing of long term care in Ireland
Edel Walsh, University College Cork

04:30 pm - 06:00 pm **PRESCRIBING BEHAVIOR FOR DRUGS** *ESA West 120*
Chair: Aileen Murphy, University College Cork

Prescription pattern of brand-name and generic drugs in the outpatient departments of hospitals in Taiwan
Yi-chen Hong, Chinese Culture University

A vertically differentiated model of non-antibiotic sales, with an application to rural India
Pau Olivella, Universitat Autònoma de Barcelona

Do doctors prescribe antibiotics out of fear of malpractice?
Sebastian Panthöfer, Universidad Carlos III de Madrid

Prescribing landscape for NOACs – What influences prescribers’ decisions?
Aileen Murphy, University College Cork

06:00 pm - 06:15 pm **TRANSFER BREAK**

06:15 pm - 07:00 pm **EUHEA BOARD MEETING / ASSEMBLY** *Senate lecture hall (ESA)*
Chair: Pedro Pita Barros, Universidade Nova de Lisboa

Friday, July 15

08:00 am - 06:00 pm **REGISTRATION OPEN**

09:00 am - 10:30 am **BALANCING COSTS AND QUALITY IN HEALTHCARE IN EUROPE: ARE STUDIES LIKE EQUIPT THE ANSWER?** *ESA West 221*
Chair: Michael F. Drummond, Centre for Health Economics, University of York

Supporting European decision-makers with what they need: an EQUIPT journey with stakeholders
Subhash Pokhrel, Health Economics Research Group, Brunel University London

Where is the money well spent?: Modelling zero-, current- and potential-investment scenarios to address tobacco use in 5 EU member states
Doug Coyle, Brunel University London and University of Ottawa

What can CEE and wider countries learn from EQUIPT: transferability of economic models at its best
Zoltan Kalo, Syreon Research Institute

09:00-10:30 am **COST OF ILLNESS** *ESA Ost 122*
Chair: Matthias Augustin, Hamburg Center for Health Economics, University Medical Center Hamburg-Eppendorf

The 2015 IDF estimates of the cost of diabetes in the European region
João Diogo da Rocha Fernandes, International Diabetes Federation

Cost of illness in patients with systemic lupus erythematosus in Spain based on real world data
David Vivas-Consuelo, Research Centre for Health Economics and Management. Universitat Politècnica de València

Cost-of-illness of lymphoedema patients in the metropolitan of Hamburg, Germany
Matthias Augustin, Hamburg Center for Health Economics, University Medical Center Hamburg-Eppendorf

Cost of illness of psoriasis in Germany
Nicole Zander, Hamburg Center for Health Economics, University Medical Center Hamburg-Eppendorf

09:00 am - 10:30 am **ECONOMICS OF PREVENTION AND SEXUALLY TRANSMITTED DISEASES** *ESA Ost 221*
Chair: Louise Jackson, University of Birmingham

Prevention vs treatment: On the valuation of serious diseases
Daniel Herrera Araujo, PSE-Hospinnomics

How might new HIV prevention products change incentives in commercial sex work? Exploring the stated preferences of female sex workers in South Africa
Matthew Quaife, London School of Hygiene and Tropical Medicine

Balancing long-term benefits and costs in cervical cancer screening – A decision-analysis for the Austrian health care context

Gaby Sroczynski, Dep. of Public Health, Health Services Research, and Health Technology Assessment, UMIT- University for Health Sciences, Medical Informatics and Technology, Hall i.T. / ONCOTYROL Center for Personalized Cancer Medicine, Innsbruck

Understanding young people’s perceptions of the value of STI screening and exploring preferences for STI screening in different settings – a qualitative study to inform DCE development

Louise Jackson, University of Birmingham

09:00 am - 10:30 am **ECONOMICS OF SUBSTANCE ABUSE**

Chair: Kathryn McCollister, University of Miami

ESA West 222

Is heavy drinking always profitable for alcohol industry? An epidemic framework for alcohol consumption

Miléna Spach, Université Paris 1 Panthéon-Sorbonne (CES)

A taxonomy of treating and preventing programs for alcohol intake: A systematic review of economic evaluations

Dolors Gil-Doménech, Universitat Internacional de Catalunya

Estimating the economic consequences of substance use disorders: Monetary conversion factors for program and policy evaluation

Kathryn McCollister, University of Miami

09:00 am - 10:30 am **HEALTH AND OUTCOMES**

Chair: Job van Exel, Erasmus University Rotterdam - Institute of Health Policy & Management

ESA Ost 120

Outcome measures in elderly care: A head-to-head comparison of the validity of the ASCOT and the ICECAP-O

Mariska Hackert, Erasmus University, Institute of Health Policy and Management

Assessing the quality perception gap in health care organizations

Stefan Ingerfurth, SRH Mobile University of Applied Sciences

How weekdays influence economic outcomes in DRG financed health care systems - a case study

Christoph Napierala, University of Lucerne

How important is health for happiness?

Job van Exel, Erasmus University Rotterdam - Institute of Health Policy & Management

09:00 am - 10:30 am **HEALTH AND SOCIAL CARE**

Chair: Rita Bastião, Faculty of Economics of the University of Porto

Lecture hall H

Resource allocation in integrated care settings: what works? Case of health and social care partnerships in Scotland

Marissa Collins, Glasgow Caledonian University

What are the inter-dependencies between health and social care and why does it matter?

Panagiotis Kasteridis, University of York

The impact of long-term care on primary care doctor consultations for people over 75

Katerina Gousia, University of Kent

The transition dynamics across different organization settings in the delivery of primary healthcare services

Rita Bastião, Faculty of Economics of the University of Porto

09:00 am - 10:30 am **HEALTH BEHAVIOR III: REGULATION AND TAXATION**

Chair: Joseph Sabia, San Diego State University & IZA

Lecture hall K

Some bad news for the fat tax and the thin subsidy: a sales tax does a better job in reducing obesity

Zarko Kalamov, University of Technology Berlin

New evidence on the ban on late-night off-premise alcohol sales in Baden-Württemberg

Jan Marcus, Hamburg Center for Health Economics, University of Hamburg

Child access prevention laws, youth gun carrying, and school shootings

Joseph Sabia, San Diego State University & IZA

09:00 am - 10:30 am **HEALTH INEQUALITIES**

Chair: Alejandro Rodriguez Caro, ULPGC

ESA Ost 222

Socioeconomic inequalities in mortality in Ireland: 1984-2008

Anne Nolan, Economic and Social Research Institute, Dublin

The impact of schooling on morbidity

Kamhon Kan, Academia Sinica

Income-related health inequalities

Amélie Adeline, University of Cergy-Pontoise - THEMA

Unconditional quantile regressions on the social gradient of obesity in Spain 1993-2014

Alejandro Rodriguez Caro, ULPGC

09:00 am - 10:30 am **INCENTIVES IN HEALTH AND HEALTH CARE**

Chair: Johanna Kokot, Universität Duisburg-Essen, CINCH

ESA West 220

Do extrinsically motivated mental health care providers have better treatment outcomes?

Robin Zoutenbier, CPB

Ambulatory care at the end of a billing period

Konrad Himmel, Hamburg Center for Health Economics, University of Hamburg

Can financial incentives promote a healthy life style and disease prevention among older people?

Marzena Tambor, Institute of Public Health; Jagiellonian University Collegium Medicum

Sorting into physician payment schemes: A laboratory experiment

Johanna Kokot, Universität Duisburg-Essen, CINCH

09:00 am - 10:30 am **INEQUALITIES IN HEALTH** ESA Ost 121
Chair: Carla Blázquez-Fernández, Universidad de Cantabria

- Inequities in the urban healthcare landscape: the case of Dhaka, Bangladesh
Shaikh Mehdi Hasan, International Centre for Diarrhoeal Disease Research, Bangladesh
- Aging in unequal circumstances: socio-demographic factors and functional limitation in Portugal
Manuel Serrano Alarcon, Escola Nacional Saude Pública
- Does social cohesion explain residents' health resilience within and between disadvantaged urban neighbourhoods: Multi-level evidence from the UK
Vladimir Sergeevich Gordeev, London School of Hygiene & Tropical Medicine
- Health polarization in Spain: A new approach based on self-assessed health data and health care expenditure
Carla Blázquez-Fernández, Universidad de Cantabria

09:00 am - 10:30 am **METHODOLOGICAL CHOICES IN ECONOMIC EVALUATIONS** ESA West 121
Chair: Jim Butler, Private consultant

- Expert elicitation of multinomial probabilities for decision analytic modelling: an application to rates of disease progression in undiagnosed and untreated melanoma
Edward Wilson, University of Cambridge
- Setting the boundaries for economic evaluation: the case of postnatal depression
Jemimah Ride, Centre for Health Economics, Monash University
- A model-based framework to estimate the cost effectiveness of interventions for childhood overweight and obesity
Colin Green, University of Exeter
- Is it time to revive cost-benefit analysis in healthcare? The conflicting results of an economic evaluation of a trial involving road traffic crash injuries
Jim Butler, Private consultant

09:00 am - 10:30 am **PRICE NEGOTIATIONS FOR PHARMACEUTICALS** ESA West 120
Chair: Charalabos-Markos Dintsios, Institute for Health Care Research and Health Economics, University of Düsseldorf

- Public, self-administrated or competitive negotiations for innovative pharmaceuticals: is there a v-shaped relationship with regards to welfare?
Jan Michael Bungenstock, vfa. Research-Based Pharmaceutical Companies Germany
- AMNOG: Do prices reflect G-BA's decisions on added benefit?
Victoria Lauenroth, Hamburg Center for Health Economics, University of Hamburg
- Implementation of AMNOG into clinical practice: the issue of the "mixed price". Results of a survey of Associations of Statutory Health Insurance Physicians and regional health insurance funds
Lennart Weegen, University of Duisburg-Essen
- Arbitration board setting reimbursement amounts for pharmaceutical innovations in Germany when price negotiations between payors and manufacturers fail: An empirical analysis of 4 years' experience
Charalabos-Markos Dintsios, Institute for Health Care Research and Health Economics, University of Düsseldorf

09:00 am - 10:30 am **PROVIDER PAYMENT AND CHOICE OF TREATMENT** ESA West 122
Chair: Lorens Helmchen, The George Washington University

- Do hospitals induce a profit-maximizing time of death? Discontinuous marginal reimbursements for passive euthanasia in Germany
Matthias Bäuml, Hamburg Center for Health Economics, University of Hamburg
- Paying informally for delivery in Hungary: Associations among cash payments, intervention rates, and respectful maternity care
Petra Baji, Department of Health Economics, Corvinus University of Budapest
- A rank-and-reward model of provider payment for preventive health services
Lorens Helmchen, The George Washington University
- Medicare payment rates, market factors, and prostate cancer treatment choices
Lorens Helmchen, The George Washington University

09:00 am - 10:30 am **THE COST OF CHRONIC DISEASES** ESA Ost 123
Chair: Marc Carreras, Serveis de Salut Integrats Baix Empordà - GRESSiReS / Universitat de Girona

- Healthcare expenditure of elderly with chronic diseases in their last year of life: findings from public health insurance schemes in Thailand
Worawan Chandoevvit, Khon Kaen University
- Analysis on the rates and cost of the readmission of elderly patients in rural areas of Hubei Province in China
RuiBo He, HuaZhong University of Science and Technology
- Ageing and health care expenditures: Exploring the role of morbidity
Marc Carreras, Serveis de Salut Integrats Baix Empordà - GRESSiReS / Universitat de Girona

10:30 am - 11:00 am **COFFEE BREAK** ESA / ESA Ost/West

11:00 am - 12:30 pm **COSTS OF MENTAL HEALTH PROBLEMS** ESA West 121
Chair: Sergio Prada, Universidad Icesi

- Understanding the impact of relapses on health care costs among patients with chronic psychotic disorders
Claire de Oliveira, Centre for Addiction and Mental Health
- Economic impact of Early Intervention in psychosis services: results from a longitudinal retrospective controlled study in England
Apostolos Tsiachrisras, University of Oxford
- Stress-induced productivity losses due to absenteeism and presenteeism in Switzerland in 2014-2015
Beatrice Brunner, Zurich University of Applied Sciences
- The effects of anxiety and mood disorders on paid sick leave in Colombia: Evidence from a mid-size health insurer
Sergio Prada, Universidad Icesi

11:00 am - 12:30 pm **DEMAND FOR HEALTH** *Chair: Tor Iversen, University of Oslo* *ESA West 221*

- Air pollution and hospital admissions: Evidence from Swiss data
Sandro Steinbach, Swiss Federal Institute of Technology in Zurich
- Long-term impacts of job displacement on job quality and satisfaction : Evidence from Germany
Lexane Weber-Baghdiguian, Paris-Dauphine University, LEDa-LEGOS
- Title: Identifying the link between unemployment and mortality: Evidence from Switzerland
Sandro Steinbach, Swiss Federal Institute of Technology in Zurich
- The effect of human capital on health behaviour after screening for colorectal cancer
Tor Iversen, University of Oslo

11:00 am - 12:30 pm **ECONOMIC EVALUATION OF HEALTH CARE IN EUROPE** *Chair: Marion Schmidt, Zurich University of Applied Sciences* *ESA Ost 122*

- Costs of hypoglycemia in insulin-treated diabetes in Switzerland: a health-economic analysis
Christina Tzogiou, Zurich University of Applied Sciences
- Reimbursement of burns by DRG in Portugal between 2000 and 2013
João Vasco Santos, Faculty of Medicine, University of Porto
- The inpatient and social care cost of atrial fibrillation in Scotland
Giorgio Ciminata, University of Glasgow
- Ovarian cancer in Switzerland: Epidemiology, inpatient treatment and costs
Marion Schmidt, Zurich University of Applied Sciences

11:00 am - 12:30 pm **HEALTH AND DEVELOPMENT** *Chair: Isabel Günther, ETH Zürich* *ESA Ost 221*

- One size will not fit all: Divergent stated preferences for new antiretroviral-based HIV prevention products across adults, adolescents and female sex workers in South Africa
Matthew Quaife, London School of Hygiene and Tropical Medicine
- Parental health shocks and schooling: The impact of mutual health insurance in Rwanda
Maame Esi Woode, INSERM-SESSTIM UMR 912
- The demand for and the impact of the KNCU Health Plan
Zlata Tanovic, Vrije Universiteit Amsterdam, Amsterdam Institute for International Development
- Desired and Excess Fertility in Developing Countries: Economic Development or Women’s Empowerment?
Isabel Günther, ETH Zürich

11:00 am - 12:30 pm **HEALTH BEHAVIOR IV: TIME PREFERENCES** *Chair: Marlène Guillon, Paris School of Economics - Sciences Po* *Lecture hall K*

- The role of time preference on healthy lifestyle choices in older adults living with chronic health conditions
Laura Dysart, University of Aberdeen
- Ashes to ashes, time to time – Parental time discounting and its role in the intergenerational transmission of smoking
Philipp Hübler, University of Augsburg
- Professional and private time preferences of Scottish general practitioners
Alastair Irvine, Health Economics Research Unit, University of Aberdeen
- Risky sexual behaviors: the role of time and risk preferences in condom use
Marlène Guillon, Paris School of Economics - Sciences Po

11:00 am - 12:30 pm **HEALTH CARE FINANCING** *Chair: Engelbert Theurl, University of Innsbruck* *Lecture hall H*

- Controlling health care spending via expenditure targets in Austria
Herwig Ostermann, Austrian Public Health Institute
- Consequences of DRG Implementation in Switzerland - Effects of Implementing a Prospective Payment System on Compliance of Length of Stay
Christoph Napierala, University of Lucerne
- Re-thinking health care financing: beyond taxes and social insurance schemes
Konrad Obermann, MIPH, University of Heidelberg
- What determines the significance of prepaid systems of health care financing? – A world-wide country-level perspective
Engelbert Theurl, University of Innsbruck

11:00 am - 12:30 pm **HEALTH CARE PRODUCTIVITY AND EFFICIENCY** *Chair: James Gaughan, Centre for Health Economics, University of York* *ESA Ost 120*

- Regional inequalities in hospital policy and productivity
Alexander Karmann, Technische Universität Dresden
- Efficiency of telemedical integrated care health plans: New evidence for Switzerland
Eva Blozik, Department of Health Sciences, Helsana Health Insurances
- "You think we look pretty good together . . ." : Skill mix and practice efficiency in dental care
Harry Hill, Centre for Health Economics at the University of Manchester
- Hospital productivity growth in the English NHS 2008 to 2014
James Gaughan, Centre for Health Economics, University of York

11:00 am - 12:30 pm	HOME CARE <i>Chair: Ricardo Rodrigues, European Centre for Social Welfare Policy and Research</i> The price-elasticity of the demand for home care services. An estimation using French administrative data <i>Marianne Tenand, PSE-ENS</i> Informal care and the use of long-term care by Dutch elderly <i>Marielle Non, CPB</i> The allotment of home care <i>Theis Theisen, University of Agder</i> Measures of economic status and equity effects in the use of long-term care in Europe: ranking by income versus wealth <i>Ricardo Rodrigues, European Centre for Social Welfare Policy and Research</i>	ESA Ost 123
11:00 am - 12:30 pm	HOSPITAL COMPETITION <i>Chair: Rosella Levaggi, University of Brescia</i> Hospital choice, competition, quality in elective care and endogeneity due to unobserved severity <i>Giuseppe Moscelli, University of York</i> Determinants of hospital choice behavior and implications for quality competition <i>Andreas Schmid, University of Bayreuth</i> Do patients choose hospitals that improve their health? <i>Nils Gutacker, Centre for Health Economics, University of York</i> Monopolistic competition for the provision of hospital care <i>Rosella Levaggi, University of Brescia</i>	ESA West 122
11:00 am - 12:30 pm	INEQUALITIES IN HEALTHCARE USE <i>Chair: Sabine Vogler, Austrian Public Health Institute</i> The differences in health care utilization between employees and the self-employed <i>Michal Horný, Boston University School of Public Health</i> Inequalities in general practice utilisation by sexual orientation: evidence from the English General Practice Patient Survey <i>William Whittaker, University of Manchester</i> Rural and urban differences in preventable hospitalizations in Taiwan: Has the difference been reduced in the past decade? <i>Chi-Chen Chen, Department of Public Health, College of Medicine, Fu-Jen Catholic University</i> Inequalities in medicine use in Central and Eastern Europe: The role of pharmaceutical policy in reducing inequalities <i>Sabine Vogler, Austrian Public Health Institute</i>	ESA Ost 121

11:00 am - 12:30 pm	INTERNATIONAL COMPARISONS <i>Chair: Julio Souza, Faculty of Medicine of the University of Porto</i> Economics of medical tourism - case studies on US - India and Germany - Hungary <i>Marc Piazolo, University of Applied Sciences Kaiserslautern</i> Developing a measure of integration and specialisation of health care professional activities across three care pathways and nine European countries <i>Jonathan Gibson, University of Manchester</i> A comparison of health system productivity growth in England and Italy from 2004 to 2011 <i>Joanna Kopinska, CEIS, University of Rome Tor Vergata</i> Potential differences in reimbursement rates for inpatient services between Portugal and Brazil <i>Julio Souza, Faculty of Medicine of the University of Porto</i>	ESA West 222
11:00 am - 12:30 pm	ISSUES IN HOSPITAL ECONOMICS <i>Chair: Ivonne Lindlbauer, Hamburg Center for Health Economics, University Medical Center Hamburg-Eppendorf</i> Skill shortage in the German hospital sector – results of a survey among German acute care hospitals <i>Andrea Thiel, Hamburg Center for Health Economics</i> International price comparisons in the hospital sector: A discussion on EUROSTAT’s new Purchasing Power Parity methodology <i>Lena Lepuschütz, Austrian Public Health Institute</i> Classification of emergency- and elective hospital cases: A machine-learning approach <i>Jonas Krämer, Hamburg Center for Health Economics, University of Hamburg</i> Deriving and validating comorbidity weights for in-hospital mortality based on nation-wide German hospital data <i>Ivonne Lindlbauer, Hamburg Center for Health Economics, University Medical Center Hamburg-Eppendorf</i>	ESA West 220
11:00 am - 12:30 pm	LABOUR AND HEALTH <i>Chair: Cornelia Henschke, Technische Universität Berlin, Department of Health Care Management</i> Retirement and cognitive decline: Evidence from global ageing data <i>Yoshinori Nishimura, The University of Tokyo</i> Having a bad attitude? The relationship between attitudes and sickness absence <i>Karen Hauge, The Frisch Centre</i> Labour participation of people living with the Human Immunodeficiency Virus: Is there any difference between HIV-positive people and the general population? <i>Luz María Peña, University of Castilla-La Mancha</i> EMS workers in Germany: The association between job satisfaction and level of burnout <i>Cornelia Henschke, Technische Universität Berlin, Department of Health Care Management</i>	ESA Ost 222

11:00 am - 12:30 pm	REFERENCE PRICING FOR DRUGS <i>Chair: Kurt Brekke, Norwegian School of Economics</i> The impact of price-cap regulations on formulary listing of generic drug products in Canada <i>Wei Zhang, Centre for Health Evaluation and Outcome Sciences; University of British Columbia</i> Pharmaceutical price regulation and competition in Japan <i>Tomofumi Anegawa, Keio University</i> Reference pricing and cost-sharing: Theory and evidence on German off-patent drugs <i>Annika Herr, DICE, Heinrich-Heine-Universität Düsseldorf</i> Does reference pricing drive out generic competition in pharmaceutical markets? Evidence from a policy reform <i>Kurt Brekke, Norwegian School of Economics</i>	ESA West 120
12:30 pm - 01:30 pm	SATELLITE SYMPOSIUM - INNOVATION IN PROVIDER PAYMENT: INNOVATIVE DIABETES REIMBURSEMENT SYSTEMS IN EUROPE <i>Chair: Michael Müller, Organisation of Economic Cooperation and Development (OECD), Paris</i> Introduction and Scope of OECD Project on Innovation in Payment Schemes <i>Michael Müller, Health Policy Agent, OECD Health Division, Organisation of Economic Cooperation and Development (OECD), Paris</i> Bundled Payments for Diabetes: The Approach of the Netherlands <i>Sigrid Mohnen, Netherlands National Institute for Public Health and the Environment (RIVM), Bilthoven</i> Rémunération sur Objectifs de Santé Publique (ROSP): Pay for Performance Reimbursement for Diabetes care in France <i>Zeyneo Or, Research Director, Institute for Research and Information in Health Economics (IRDES), Paris</i> Disease Management Programs: The German Approach for Diabetes Care <i>Rudolf Blankart, Hamburg Center for Health Economics, University of Hamburg</i>	Lecture hall M
12:30 pm - 01:30 pm	LUNCH / POSTER SESSIONS	ESA / ESA Ost/West ESA 3 floor
01:30 pm - 03:00 pm	APPLIED COST-EFFECTIVENESS ANALYSIS <i>Chair: Francesco Saverio Mennini, University of Rome "Tor Vergata"</i> Comparative analysis of cost and effectiveness between generic and brand antibiotics: The case of uncomplicated urinary tract infection <i>Yu-Shiuan Lin, nsitute of Health Policy and Management, National Taiwan University</i> Cost-effectiveness of molecular profile selection for cetuximab plus chemotherapy in recurrent/metastatic head and neck cancer <i>Carla Rognoni, Centre for Research on Health and Social Care Management (CeRGAS), Bocconi University, Milan, Italy</i>	ESA West 120

	Is statin use cost-effective or not? The case of patients with acute myocardial infarction <i>Lien Nguyen, National Institute for Health and Welfare THL</i> Early treatment in HCV: is that a cost-effective option from the Italian perspective? <i>Francesco Saverio Mennini, University of Rome "Tor Vergata"</i>	
01:30 pm - 03:00 pm	ECONOMIC EVALUATION OF HEALTH CARE IN GERMANY 1 <i>Chair: Christian Brettschneider, Hamburg Center for Health Economics, University Medical Center Hamburg-Eppendorf</i> The impact of depressive symptoms on health care costs in late life: longitudinal findings from the AgeMooDe study <i>Jens-Oliver Bock, Hamburg Center for Health Economics, University Medical Center Hamburg-Eppendorf</i> Assessing the cost of smoking in Germany with insurance claim data – Validity, consistency and limitations <i>Tobias Effertz, Institute for Commercial Law - University of Hamburg</i> Estimation of excess costs in patients with somatization syndrome in Germany <i>Alexander Konnopka, Hamburg Center for Health Economics, University Medical Center Hamburg-Eppendorf</i> The economic burden of panic disorders in Germany: The special role of agoraphobia <i>Christian Brettschneider, Hamburg Center for Health Economics, University Medical Center Hamburg-Eppendorf</i>	ESA Ost 122
01:30 pm - 03:00 pm	EFFICIENCY IN PRIMARY CARE <i>Chair: Maude Laberge, University of Florida</i> Efficiency in the delivery of primary healthcare services: a longitudinal analysis <i>Rita Bastião, Faculty of Economics of the University of Porto</i> Focus on productivity in primary health in order to secure sustainable health care <i>Morten Gunnersen, Region Syddanmark</i> Efficiency of Ontario primary care physicians: A Stochastic Frontier Analysis <i>Maude Laberge, University of Florida</i>	ESA West 221
01:30 pm - 03:00 pm	FINANCING AND CARE CHOICES IN LTC <i>Chair: Dörte Heger, RWI – Leibniz Institute for Economic Research</i> Long-term care insurance versus self-insurance: Are assets substitute or complementary to long-term care insurance? <i>Nina Zerrar, Paris Dauphine University</i> Does independent needs assessment limit supplier-induced moral hazard in long-term care? <i>Rudy Douven, CPB Netherlands Bureau for Economic Policy Analysis and Erasmus University Rotterdam</i> The role of culture in long-term care <i>Elena Gentili, Università della Svizzera Italiana (University of Lugano)</i> Care choices in Europe: To each according to his needs? <i>Dörte Heger, RWI – Leibniz Institute for Economic Research</i>	ESA Ost 123

01:30 pm - 03:00 pm	HEALTH BEHAVIOR V: SURVEYS AND EXPERIMENTS <i>Chair: Harald Tauchmann, FAU</i> Validation of a patient reported outcome (PRO) questionnaire for patients with asthma and/or COPD <i>Fabian Kreimendahl, Institute of Empirical Health Economics</i> Lifestyle and health care expenditure of adolescents <i>Sigrid M. Mohnen, National Institute of Public Health and the Environment</i> How do consumers respond to nutritional Front-of-Pack labels? Evidence from a natural experiment <i>Eleonora Fichera, University of Manchester</i> Weight loss and sexual activity among obese individuals: Establishing a causal Link <i>Harald Tauchmann, FAU</i>	Lecture hall K
01:30 pm - 03:00 pm	HEALTH BEHAVIOR VI: BODY WEIGHT <i>Chair: Paolo Nicola Barbieri, Centre for Health Economics, University of Gothenburg</i> Long-run health effects of sports and exercise <i>Nazmi Sari, University of Saskatchewan</i> Is family contagious? Transmission of weight status (mis-)perceptions <i>Andreas Kucher, University of Augsburg</i> Social distortion in weight perception <i>Paolo Nicola Barbieri, Centre for Health Economics, University of Gothenburg</i>	ESA Ost 221
01:30 pm - 03:00 pm	HEALTH OUTCOMES IN MENTAL HEALTH <i>Chair: Elena A. Phillips, Hamburg Center for Health Economics, University of Hamburg</i> Constructing classification system for a new QALY measure in mental health: Recovering Quality of Life (ReQoL) <i>Anju Keetharuth, University of Sheffield</i> Antidepressant consumption, hospitalizations and suicides: Evidence from Switzerland <i>Olaf Verbeek, Università della Svizzera Italiana</i> Impact of antidepressant treatments on health service use and outcomes for patients with major depressive disorder <i>Elise Chia-Hui Tan, National Taiwan University</i> How effective are web-based mental health interventions in a workplace setting? A systematic review <i>Elena A. Phillips, Hamburg Center for Health Economics, University of Hamburg</i>	ESA West 121
01:30 pm - 03:00 pm	HOSPITAL EFFICIENCY <i>Chair: Thomas Cypionka, IHS HealthEcon</i> Hospital efficiency under global budgeting: Evidence from Taiwan <i>Meng-Chi Tang, National Chung Cheng University</i> Inefficient or just different? An efficiency analysis of private hospitals in Malaysia <i>Siew Hwa Yen, Universiti Sains Malaysia</i>	ESA Ost 120

	Productive efficiency measures of Greek public hospitals using a two-stage DEA approach <i>Roxani Karagiannis, Centre of Planning and Economic Research (KEPE)</i> The need for improving efficiency: Austrian hospitals under pressure <i>Thomas Cypionka, IHS HealthEcon</i>	
01:30 pm - 03:00 pm	INEQUALITIES, INSURANCE AND HEALTHCARE <i>Chair: Magalie Vigé, University of Poitiers</i> The social solidarity of the French health insurance system <i>Florence Jusot, Université Paris Dauphine</i> Determinants of voluntary health insurance drop-out in Kassala State, Eastern Sudan <i>Chantal Herberholz, Faculty of Economics, Chulalongkorn University</i> How does area deprivation drive health care costs? The impact of regional disadvantages on unwarranted variation in health care expenditures <i>Ines Weinhold, WIGz, Leipzig</i> Forgone healthcare in Poitou-Charentes, France <i>Magalie Vigé, University of Poitiers</i>	ESA Ost 121
01:30 pm - 03:00 pm	MISUSE OF HEALTH CARE AND THE ROLE OF CONTINUITY OF FAMILY CARE <i>Chair: Geoff Ballinger, Canadian Institute for Health Information (CIHI)</i> Medical overuse in Switzerland: How frequent is preoperative chest radiography? <i>Oliver Reich, Helsana</i> A spatiotemporal analysis of C-section rates in Portuguese NHS hospitals <i>Ceu Mateus, Division of Health Research, Lancaster University</i> Continuity of care with family medicine physicians: Why it matters <i>Geoff Ballinger, Canadian Institute for Health Information (CIHI)</i>	Lecture hall H
01:30 pm - 03:00 pm	PHYSICIAN SPECIALTY CHOICE AND WORKFORCE PLANNING <i>Chair: Jonathan Gibson, University of Manchester</i> Physician emigration, wage incentives and training costs in workforce planning: a policy analysis using an agent-based model <i>Mário Amorim Lopes, FEUP, INESC-TEC</i> Medical specialty choice and practice location: The case of Portuguese junior doctors <i>Pedro Ramos, FMUP, HCFMUSP</i> Do female role models have an impact on the specialty choices of female medical students? Empirical evidence from the Spanish medical resident market <i>Idaira Rodriguez Santana, University of York (Centre for Health Economics)</i> Preferences, expectations and career choices: A best worst scaling study of junior doctors' choice of specialism in England <i>Jonathan Gibson, University of Manchester</i>	ESA West 222

01:30 pm - 03:00 pm	PROVIDER COMPETITION <i>Chair: Lorens Helmchen, The George Washington University</i> Does competition have an effect on quality and price in physiotherapy? <i>Piia Pekola, Social Insurance Institution of Finland</i> The effect of hospital privatization on medical expenditures under price regulation: Evidence From China <i>Wenbin Zang, Southwestern U of Finance and Economics</i> Survival Guaranteed or Your CABG Is on Us – Efficient Quality Revelation in Healthcare <i>Lorens Helmchen, The George Washington University</i> Kickbacks in medical expert markets <i>Stefan Felder, University of Basel (cancelled)</i>	ESA West 122
01:30 pm - 03:00 pm	RISK SELECTION <i>Chair: Jan Brosse, Hamburg Center for Health Economics, University of Hamburg</i> Improving risk adjustment between social health insurance funds by adding variables for co-payment exemption? <i>Juergen Wasem, University Duisburg-Essen</i> Asymmetric Information with multiple risks: the case of the Chilean Private Health Insurance Market <i>Matilde Machado, Universidad Carlos III de Madrid</i> Health insurance coverage expansion in the United States: A careful balancing act <i>John Hsu, Harvard Medical School</i> Direct risk selection in the German social health insurance system: A field experiment <i>Jan Brosse, Hamburg Center for Health Economics, University of Hamburg</i>	ESA West 220
01:30 pm - 03:00 pm	STRESSFULL EVENTS AND HEALTH <i>Chair: Damien de Walque, The World Bank</i> Does the burglar also disturb the neighbor? Crime spillovers on individual well-being <i>Christian Buennings, University of Paderborn / RWI – Leibniz Institute for Economic Research</i> Weather-related disaster and mental health: A case of damage to housing <i>Olena Stavrunova, University of Technology, Sydney</i> Health effects of the Greek economic crisis: Empirical analysis of total and cause-specific mortality <i>Charitini Stavropoulou, City University London</i> The effect of stress on later-life health: Evidence from the Vietnam draft <i>Damien de Walque, The World Bank</i>	ESA Ost 222
03:00 pm - 03:15 pm	COFFEE BREAK	ESA / ESA Ost/West

03:15 pm - 04:45 pm	CHANGES IN DRUG REIMBURSEMENT POLICY <i>Chair: Patrick Moore, Trinity College Dublin</i> Portugal's memorandum: Higher understanding, lower drug prices <i>Filipe Correia, NOVA School of Business and Economics</i> When insurer policies designed to promote generic prescribing result in higher health care costs <i>Bruce Stuart, University of Maryland Baltimore</i> Reimbursement changes and drug switching: Are severe patients less affected? <i>Shou-Hsia Cheng, Institute of Health Policy and Management, College of Public Health, National Taiwan University</i> The impact on medication use of a change in health insurance status <i>Patrick Moore, Trinity College Dublin</i>	ESA West 120
03:15 pm - 04:45 pm	DETERMINANTS OF HEALTH 2 <i>Chair: Korbinian Nagel, Helmut-Schmidt-University Hamburg</i> Reassessing learning curves in health: Using a LASSO and objective prior information to capture subgroup contributions <i>Raf Van Gestel, University of Antwerp</i> Adaptation to health states: Evidence from the English Longitudinal Study of Ageing (ELSA) <i>Victoria Serra-Sastre, City University London</i> Vaccine injury compensation programs: The case of immunization of children against pertussis and measles in the US and the UK <i>Dorota Girard, University of Nantes</i> The effects of per capita income on population health: Does the age group matter? Evidence from two centuries <i>Korbinian Nagel, Helmut-Schmidt-University Hamburg</i>	ESA West 222
03:15 pm - 04:45 pm	EXPLAINING THE DEMAND FOR HEALTH CARE <i>Chair: Joan Gil, University of Barcelona</i> Demand for formal health care among the elderly <i>Sílvia Sousa, University of Minho</i> Disentangling the reciprocate effects of need, demand and supply in ambulatory care – An instrumental variable approach to predict distance sensitive health service utilization in space <i>Danny Wende, WIG2 Wissenschaftliches Institut für Gesundheitsökonomie und Gesundheitssystemforschung</i> Price sensitivity of demand for pharmaceuticals: An analysis based on the regression-kink design <i>Mikael Svensson, University of Gothenburg</i> The effects of non-adherence on health care utilisation: panel data evidence on uncontrolled diabetes <i>Joan Gil, University of Barcelona</i>	ESA West 221

03:15 pm - 04:45 pm	HEALTH PROMOTION AND DISEASE PREVENTION PROGRAMS <i>Chair: Cordula Barth, University Duisburg-Essen</i>	Lecture hall K
	<p>The effect of an organized breast cancer screening program on mammography participation: Evidence from France <i>Léontine Goldzahl, University of Paris</i></p> <p>The Scottish Keep Well Health Check Program: An interrupted time series analysis <i>Claudia Geue, University of Glasgow</i></p> <p>Identifying the utility and disutility associated with the over-treatment of early breast cancers for use in the economic evaluation of breast screening programmes <i>Hannah L Bromley, University of Birmingham</i></p> <p>Cost-effectiveness analysis of the introduction of a guideline-based hepatitis B and C screening into the check-up at general practitioners <i>Cordula Barth, University Duisburg-Essen</i></p>	

03:15 pm - 04:45 pm	HEALTH, SLEEP AND SCHOOLING <i>Chair: Sotiris Vondoros, King's College London</i>	ESA Ost 221
	<p>Population health economic evaluation of the school-based Roots of Empathy programme in Northern Ireland <i>Nicole Boyer, University of Glasgow</i></p> <p>The effect of different types of disabilities and learning difficulties on partial and full dropout behavior <i>Rossella Iraci Capuccinello, Lancaster University</i></p> <p>British summer time and road traffic accidents in the UK <i>Sotiris Vondoros, King's College London</i></p>	

03:15 pm - 04:45 pm	HOSPITAL MARKETS <i>Chair: Adam Pilny, RWI – Leibniz Institute for Economic Research</i>	ESA West 121
	<p>Location choice and quality competition in mixed hospital markets <i>Oddvar Kaarboe, HELED, UiO</i></p> <p>Much ado about nothing? A review of pay-for-performance programs in the inpatient sector in OECD countries <i>Ricarda Milstein, Hamburg Center for Health Economics, University of Hamburg</i></p> <p>Are costs differences between specialist and general hospitals compensated by the prospective payment system? <i>Francesco Longo, University of York</i></p> <p>Explaining differentials in subsidy levels among hospital ownership types in Germany <i>Adam Pilny, RWI – Leibniz Institute for Economic Research</i></p>	

03:15 pm - 04:45 pm	IMPACTS OF BURDEN OF DISEASE OUTSIDE THE HEALTH CARE SECTOR <i>Chair: R. Vincent Pohl, University of Georgia</i>	ESA Ost 122
	<p>Economic analysis of formal care, informal care, and productivity losses in primary care patients who screened positive for dementia in Germany <i>Bernhard Michalowsky, German Center for Neurodegenerative Diseases within the Helmholtz Association, site Rostock/Greifswald</i></p> <p>The cost of informal support and its association with midlife stroke survivors dependency <i>Josfine Persson, University of Gothenburg, Sahlgrenska Academy</i></p> <p>Indirect costs of cancer: Systematic review and proposal model for transferability between countries <i>Juan del Llano Señaris, Gaspar Casal Foundation</i></p> <p>Health and work in the family: Evidence from spouses' cancer diagnoses <i>R. Vincent Pohl, University of Georgia</i></p>	

03:15 pm - 04:45 pm	IMPROVING QUALITY AND VALUE OF CHRONIC DISEASE MANAGEMENT IN PEOPLE-CENTERED HEALTH SYSTEMS: EVIDENCE FROM THE ASIA-PACIFIC REGION <i>Chair: Qingyue Meng, China Center for Health Development Studies, Peking University</i>	ESA Ost 120
	<p>Avoidable hospitalizations and the net value of expanded insurance for outpatient services: Evidence from diabetes in China <i>Hai Fang, China Center for Health Development Studies, Peking University</i></p> <p>Predicting the risk of mortality and stroke in patients with diabetes: valuing health status in a developed Chinese population <i>Jianchao Quan, The University of Hong Kong</i></p> <p>Measuring the potential saving and quality improvement for the care of DM patients under the Pay-for-Performance scheme in Taiwan <i>Jui-fen Rachel Lu, Department of Health Care Management, Chang Gung University</i></p> <p>Health signals, behavioral change, and the net value of diabetes treatment: Evidence from mandatory check-ups in Japan <i>Toshiaki Iizuka, Department of Economics, University of Tokyo</i></p>	

03:15 pm - 04:45 pm	MENTAL HEALTH AND LONG-TERM CARE <i>Chair: Monika Riedel, Institue for Advanced Studies, Vienna</i>	ESA Ost 123
	<p>Issues in the economic evaluation of social care interventions: Reablement case study <i>Helen Weatherly, Centre for Health Economics</i></p> <p>Getting to the roots of cognitive decline <i>Thomas Bassetti, University of Padua</i></p> <p>Forecasting care dependency in Austria – Methodological challenges in modelling demographic variables <i>Martin Zuba, Austrian Public Health Institute</i></p> <p>Access to psychotherapy in the community setting: Comparison of eight Austrian Bundesländer <i>Monika Riedel, Institue for Advanced Studies, Vienna</i></p>	

03:15 pm - 04:45 pm	METHODOLOGICAL / VALUATION ASPECTS OF EQ-5D <i>Chair: Kristina Klose, University of Bielefeld, Leibniz Universität Hannover / CHERH</i> Comparing EQ-5D-3L and EQ-5D-5L in the Portuguese general population <i>Pedro Ferreira, CEISUC / FEUC</i> Comparing valuation of the EQ-5D-Y and the EQ-5D-3L: The impact of wording and perspective <i>Simone Kreimeier, University of Bielefeld, Faculty of Health Sciences, Department for Health Economics and Health Care Management</i> Estimation of the EQ-5D-5L value set for Portugal <i>Pedro Ferreira, CEISUC / FEUC</i> An EQ-5D-5L value set for Germany <i>Kristina Klose, University of Bielefeld, Leibniz Universität Hannover / CHERH</i>	ESA Ost 222
03:15 pm - 04:45 pm	PATIENTS' PREFERENCES AND SCARCITY IN THE SUPPLY OF CARE <i>Chair: Lavanya Diwakar, University of Birmingham</i> Physician shortages in hard to serve regions: How does the population in rural areas evaluate the primary healthcare provision and the introduction of new models of care? <i>Ulla Tangermann, Hannover Medical School</i> Preferences for primary health care in rural areas <i>Kim- Sarah Kleij, Hannover Medical School</i> Parent experiences and preferences for paediatric allergy pathways in the west midlands region of the United Kingdom- A qualitative study <i>Lavanya Diwakar, University of Birmingham</i>	Lecture hall H
03:15 pm - 04:45 pm	PHARMACEUTICAL PRICE REGULATIONS <i>Chair: Laura Birg, University of Göttingen</i> Interface management policies for medicines: a review of policy mechanisms and frameworks for bridging out-patient and in-patient pharmaceutical provision <i>Sabine Vogler, Gesundheit Österreich GmbH (GÖG / Austrian Public Health Institute)</i> Effect of reference price system on the costs of pharmaceuticals: Five-year experiences from Finland <i>Timo Maljanen, Social Insurance Institution</i> External reference pricing and the choice of country baskets and pricing rules <i>Laura Birg, University of Göttingen</i> Prescription to over-the-counter switching <i>Laura Birg, University of Göttingen</i>	ESA West 122

03:15 pm - 04:45 pm	PREFERENCES AND PRIORITIES <i>Chair: Neil McHugh, Yunus Centre for Social Business and Health, Glasgow Caledonian University</i> Eliciting distributional weights for QALYs <i>Cam Donaldson, GCU</i> Public and decision-maker prioritisation preferences and their implications in an implicit priority-setting process <i>Chris Skedgel, University of East Anglia</i> Priority to end of life treatments? Views of the public in the Netherlands <i>Job van Exel, Erasmus University Rotterdam - Institute of Health Policy & Management</i> Are life extending treatments for terminal illnesses given special consideration by the public? An empirical study using a 'policy choice' approach <i>Neil McHugh, Yunus Centre for Social Business and Health, Glasgow Caledonian University</i>	ESA Ost 121
03:15 pm - 04:45 pm	SPECIFIC DISEASES AND HOSPITAL TREATMENT <i>Chair: Troels Kristensen, University of Southern Denmark, COHERE & Research Unit of General Practice</i> Disparities in skin cancer characteristics between German sickness funds <i>Ines Schäfer, hche-IVDP-UKE</i> Obesity as a single predictor for hospital length of stay <i>Stefanie Knöpfel, Friedrich-Alexander-Universität Erlangen-Nürnberg</i> Research on treatment information transfer of township-county readmission <i>Zhang Yan, Huazhong University of Science and Technology</i> Point-of-care testing of HbA1c in diabetes care and preventable hospital admissions <i>Troels Kristensen, University of Southern Denmark, COHERE & Research Unit of General Practice</i>	ESA West 220
04:45 pm - 05:00 pm	COFFEE BREAK	ESA / ESA Ost/Westt
05:00 pm - 06:00 pm	SECOND PLENARY Complementary health insurance and regulation of health care systems <i>Brigitte Dormont, University Paris Dauphine</i>	Lecture hall A
07:00 pm - 12:00 pm	EUHEA CONFERENCE 2016 EVENING EVENT <i>Cap San Diego</i>	

Saturday, July 16

08:00 am - 12:00 pm	REGISTRATION OPEN	
09:00 am - 10:30 am	COST-EFFECTIVENESS STUDIES - METHODOLOGICAL ISSUES AND RESULTS <i>Chair: Christian Asseburg, Swedish Institute for Health Economics IHE</i> Using care delivery framework for the assessment of breast cancer screening models – A systematic review of simulation models with a focus on input parameters <i>Matthias Arnold, LMU Munich</i> Including family health spillovers in economic evaluation <i>Hareth Al-Janabi, University of Birmingham</i> Cost-effectiveness of pneumococcal vaccines for the immunization of elderly in Germany <i>Alexander Kuhlmann, Leibniz Universität Hannover</i> Position in treatment sequence can determine cost-effectiveness: An example from multiple sclerosis <i>Christian Asseburg, Swedish Institute for Health Economics IHE</i>	ESA West 120
09:00 am - 10:30 am	ECONOMIC EVALUATION OF HEALTH CARE IN GERMANY 2 <i>Chair: Tobias Effertz, Institute for Commercial Law - University of Hamburg</i> Analysis of contemporary HIV/AIDS healthcare costs in Germany: Driving factors and distribution across antiretroviral therapy lines <i>Marina Treskova, Center for Health Economics Research Hannover (CHERH)</i> Excess costs of Ischemic Heart Disease in COPD patients – a comparison of covariate adjustment via linear regression and matched pairs <i>Larissa Schwarzkopf, Helmholtz Zentrum München / Institute for health economics and health care management</i> Are healthcare costs increased in overweight or obese adolescents? <i>Renee Stark, Helmholtz Zentrum München, IGM</i> Medical costs from concordant and discordant health states and lifestyles among married couples <i>Tobias Effertz, Institute for Commercial Law - University of Hamburg</i>	ESA Ost 122
09:00 am - 10:30 am	EMPIRICAL HEALTH ECONOMICS: SURVEYS AND REGISTER DATA <i>Chair: Brendan Walsh, City University London</i> Does health literacy influence preferences and choice behavior: a vaccination case study <i>Jorien Veldwijk, Uppsala University & RIVM</i> Early retirement decision: What are the main reasons? <i>Moussa Richard, THEMA / Université de Cergy-Pontoise</i> Route of diagnosis and hospital costs in cancer care: Dealing with censored data <i>Brendan Walsh, City University London</i>	ESA West 122

	An Analytic Hierarchy Process (AHP) model to elicit patient preferences for objectives of diabetes coaching programmes <i>Belinda Martschinke, EBS Universität für Wirtschaft und Recht</i>	
09:00 am - 10:30 am	HEALTH TECHNOLOGY ASSESSMENT <i>Chair: Tina Krieger, RTI Health Solutions</i> Cost-effectiveness analysis of Solitaire™ Revascularization Device in the treatment of patients with acute ischemic stroke <i>Matteo Ruggeri, Catholic University of Sacred Heart - Rome</i> Willingness to pay and the sensitivity of willingness to pay for interdisciplinary musculo-skeletal clinics: a contingent valuation study in Quebec, Canada <i>Thomas Poder, UETMIS and Centre de Recherche du CHUS, CIUSSS de l'Estrie - CHUS</i> Why are there differences in HTA recommendations across countries? An in-depth case study analysis exploring the interface between the macro and micro-level factors influencing these decisions <i>Laia Maynou Pujolras, CRES, Universitat Pompeu Fabra</i> A qualitative comparison of German and UK health technology assessments: vedolizumab case study <i>Tina Krieger, RTI Health Solutions</i>	Lecture hall K
09:00 am - 10:30 am	HOSPITAL PAYMENT REFORM <i>Chair: Søren Rud Kristensen, University of Manchester</i> Swiss DRG redesigned: Can compensation for financial risk improve competition among hospitals? <i>Philippe Widmer, Polynomics / ETH Zürich</i> Prospective payment for inpatient psychiatric care. A system to be developed for Switzerland <i>Marco Riguzzi, Zürich University of Applied Sciences</i> How do hospitals respond to price changes in emergency departments? <i>Beth Parkinson, The University of Manchester</i> Hospital response to payment reform: The effect of financial incentives for reducing hospital acquired conditions <i>Søren Rud Kristensen, University of Manchester</i>	ESA West 121
09:00 am - 10:30 am	INCENTIVES FOR VALUE FOR MONEY INNOVATION: FROM THE LAB BENCH TO REIMBURSEMENT <i>Chair: Marisa Miraldo, Imperial College London</i> The determinants of innovation <i>Eliana Barrenho, Imperial College London</i> User charges: barrier to access or optimisation tool? <i>Peter Smith, Imperial College London</i> Dynamic efficiency and value based pricing <i>Adrian Towse, Office for Health Economics</i> Empirical economic analysis of orphan drug legislation impact on innovation <i>Philippe Gorry, University of Bordeaux</i>	ESA Ost 123

09:00 am - 10:30 am

ISSUES IN PREFERENCE ELICITATION

Chair: Paul Mitchell, University of Bristol

Assessing quality of life of self-reported rheumatic patients
Pedro Ferreira, CEISUC/FEUC

To diagnosis embryonic developmental anomalies of genetic origin with exome sequencing: a discrete choice experiment to assess parents’ preferences for disclosure of findings and support
Aurore Pelissier, LEDi - Université de Bourgogne - CNRS 6307 - INSERM U1200

Eliciting general population’s preferences for home care and proximity structures versus hospital care in cancer: Development of a decision aid integrating a contingent valuation survey
Jennifer Margier, GATE Lyon-Saint-Etienne (UMR 5824 CNRS), Grenoble University Hospital, Léon Bérard Cancer Centre, GRENOBLE-LYON

Verstehen Sie? Validating the German translation of the ICECAP-A capability wellbeing measure in seven disease groups and a healthy population sample
Paul Mitchell, University of Bristol

ESA West 221

09:00 am - 10:30 am

METHODS FOR ECONOMIC EVALUATION OF DEMENTIA INTERVENTIONS

Chair: Colin Green, University of Exeter Medical School, University of Exeter

Long-term resource use and related costs in relation to functional dependence in persons with Alzheimer’s disease
Janne Martikainen, School of Pharmacy, University of Eastern Finland

Methodologies to analyze the use of health care and social resources by people with dementia. Applications of National Health Registries
Jan Sørensen, Centre of Health Economics Research, University of Southern Denmark

Estimating the cost-effectiveness of screening and prevention of alzheimer’s disease: a markov model
Liza Sopina, Centre of Health Economics Research, University of Southern Denmark

Predicting the progression of Alzheimer’s disease dementia: a multi domain health policy model
Colin Green, University of Exeter Medical School, University of Exeter

ESA Ost 120

09:00 am - 10:30 am

PATIENT PREFERENCES AND OUTCOME RESEARCH

Chair: Joanna Coast, University of Bristol

The daily experience sampling questionnaire (DESQ): A new approach to measuring experienced utility
Christine Blome, Hamburg Center for Health Economics, University Medical Center Hamburg-Eppendorf

Therapy preferences of patients with lung and colon cancer in Germany – A discrete choice experiment
Katharina Schmidt, Center for Health Economics Research Hannover, Leibniz Univeristät Hannover

Developing an experience-based value set for the EQ-5D-5L in Germany
Reiner Leidl, Helmholtz Zentrum München

ESA Ost 222

09:00 am - 10:30 am

PHYSICAL ACTIVITY AND DIABETES

Chair: Nora Döring, Karolinska Institutet

Adaptation and adaptive preferences in health status and capability measurement among those at end of life
Joanna Coast, University of Bristol

The impact of guideline adherence on hospitalization by using simple performance measures: A claims-based cohort study of patients with diabetes
Carola A. Huber, Department of Health Sciences, Helsana Group

Cost-effective solutions for primary prevention of diabetes
João Diogo da Rocha Fernandes, International Diabetes Federation

Physical activity on prescription-do programs characteristics influence effectiveness? Results from a meta-analysis
Jelena Arsenijevic, Maastricht University

Cost-effectiveness of obesity prevention in early childhood: A systematic literature review
Nora Döring, Karolinska Institutet

ESA Ost 221

09:00 am - 10:30 am

REGIONAL VARIATION IN SUPPLY AND HEALTH-CARE USE

Chair: Felix Roesel, ifo Institute, Dresden Branch

Causes of regional variation in health-care use
Martin Salm, Tilburg University

Quality gains and losses from health care regionalization: Evidence from maternity clinic closures in Sweden
Daniel Avdic, University of Duisburg-Essen

How local governance mediates the association between primary health care and amenable mortality: longitudinal evidence from the Brazilian family health program
Thomas Hone, Imperial College London

Political business cycles in healthcare supply
Felix Roesel, ifo Institute, Dresden Branch

Lecture hall H

09:00 am - 10:30 am

SOCIOECONOMIC STATUS, HEALTH AND HEALTHCARE

Chair: Sheelah Connolly, Economic and Social Research Institute

Socioeconomic gradient in health in Canada: Is the gap widening or narrowing?
Mohammad Hajizadeh, School of Health Administration - Dalhousie University

Does socioeconomic status affect lengthy wait time in Canada? Evidence from Canadian Community Health Surveys
Mohammad Hajizadeh, School of Health Administration - Dalhousie University

Socioeconomic status and physicians treatment decisions
Karin Monstad, Uni Research Rokkan Center

Variations in unmet need for medical and dental services in Ireland
Sheelah Connolly, Economic and Social Research Institute

ESA Ost 121

10:30 am - 10:45 am

COFFEE BREAK

ESA / ESA Ost/West

10:45-12:15

DRUGS: ASSESSED, PRESCRIBED AND DUMPED

Chair: Charalabos-Markos Dintsios, Institute for Health Care Research and Health Economics, University of Düsseldorf

Relevance and economic consequences of medicine waste in Vienna: analysis of a house-hold garbage sample

Sabine Vogler, WHO Collaborating Centre for Pharmaceutical Pricing and Reimbursement Policies, Health Economics Department, Gesundheit Österreich GmbH (GÖG, Austrian Public Health Institute), Vienna, Austria

Impact of drug price reduction on physicians' prescription patterns and drug expenditures of antihypertensive drugs in Taiwan

Ming-Chin Yang, Institute of Health Policy and Management, National Taiwan University

Pharmaceutical regulation and drug quality

Laura Birg, University of Göttingen

Pharmaceutical industry's experiences with the scientific advice offered by the Federal Joint Committee within the early benefit assessment of drugs in Germany

Charalabos-Markos Dintsios, Institute for Health Care Research and Health Economics, University of Düsseldorf

ESA West 120

10:45-12:15

HEALTH CARE FOR THE ELDERLY

Chair: Anne Nolan, Economic and Social Research Institute

Health economics of potentially inappropriate medication in the elderly

Dirk Heider, Hamburg Center for Health Economics, University Medical Center Hamburg-Eppendorf

Determinants of emergency room visits among older population

Zeynep Or, IRDES

The economic burden of cardiovascular disease in the older Irish population

Patrick Moore, Trinity College Dublin

Health care financing and undiagnosed illness among older adults in Ireland

Anne Nolan, Economic and Social Research Institute

ESA Ost 122

10:45-12:15

HEALTH INSURANCE COVERAGE

Chair: Jérôme Wittwer, University of Bordeaux

Old news? Is it even binding? A four-year examination of the medical loss ratio regulation

Pinar Karaca-Mandic, University of Minnesota

Television advertising, news and the uninsured: Market level evidence from the first open enrollment period of health insurance marketplaces

Pinar Karaca-Mandic, University of Minnesota

The likely effects of employer-mandated complementary health insurance on health coverage in France

Aurélie Pierre, Irdes

Gatekeeping and the utilization of physician services in France: Evidence on the Médecin Traitant Reform

Jérôme Wittwer, University of Bordeaux

Lecture hall H

10:45-12:15

HEALTHCARE PROGRAMS: EVALUATION

Chair: Ioannis Laliotis, University of Surrey

Evaluation of the impact of blood donation campaigns

Maria Errea, University of Massachusetts Amherst

SYSKON. Re-configuration of health and disease. Ethical, psycho-social, legal and health economic challenges of systems medicine. The budgetary impact genetic testing for hereditary breast cancer to the statutory health insurance

Silke Neusser, Institute for Health Care Management and Research

The macroeconomic impact of the Digital Health Industry in Germany - A first quantification and economic evaluation of its potentials

Jan-Nicolas Gerlach, WifOR Darmstadt

Promoting normal birth and reducing caesarean section rates: An evaluation of the Rapid Improvement Programme

Ioannis Laliotis, University of Surrey

ESA Ost 120

10:45-12:15

HOSPITAL RESPONSE TO ECONOMIC INCENTIVES

Chair: Simon Reif, University of Erlangen-Nuremberg & IDK Evidence Based Economics

Public hospital payment systems, conflicts of interest, and institutional corruption: The Austrian case

Margit Sommersguter-Reichmann, University of Graz

Using patient reports to identify upcoding by providers under activity based payment

Philip Britteon, The University of Manchester

Is it good to be too light? - The consequences of birth weight thresholds in hospital reimbursement systems

Simon Reif, University of Erlangen-Nuremberg & IDK Evidence Based Economics

ESA West 121

10:45-12:15

ISSUES IN ECONOMIC EVALUATION

Chair: Barbara Buchberger, University of Duisburg-Essen, Institute for Health Care Management and Research

The impact of culture, values and institutional context on the methods and use of economic evaluation

Aleksandra Torbica, Università Luigi Bocconi

A method for incorporating equity in economic evaluations: The multi-attribute equity state approach

Jeff Round, University of Bristol

Decision-support framework for prioritization of health technologies in Portugal: analysis of the economic efficiency of medicines classified as Therapeutic Equivalence vs Therapeutic Added Value

Ricardo Ramos, INFARMED, I.P.

Effectiveness of courses in evidence-based medicine for year 3 undergraduates- results of an evaluation

Barbara Buchberger, University of Duisburg-Essen, Institute for Health Care Management and Research

ESA Ost 121

10:45-12:15	MEDICAL INNOVATION <i>Chair: Gisela Hostenkamp, COHERE University of Southern Denmark</i> Integrating drugs budget impact and drugs market uptake models in the Horizon Scanning phase <i>Claudio Jommi, Department of Pharmaceutical Sciences, Università del Piemonte Orientale, Novara</i> Horizon scanning in health care – a German perspective <i>Laura Krabbe, University of Duisburg-Essen</i> Does medical innovation improve adherence to diabetes medication? Evidence from Danish registry data <i>Gisela Hostenkamp, COHERE University of Southern Denmark</i>	Lecture hall K
10:45-12:15	METHODOLOGY AND ECONOMETRICS: SURVEY DATA <i>Chair: Angela Robinson, University of East Anglia</i> Beyond mean-centred health effect assessment: Assessing comprehensive health distributions using structured additive distributional regression <i>Alexander Sohn, Universität Göttingen</i> Estimating QALY loss in longitudinal cohort studies - methodological issues and first results <i>Rolf Holle, Helmholtz Zentrum München</i> Dynamic interactions between health condition and job status : A nonparametric Analysis <i>Moussa Richard, THEMA / Université de Cergy-Pontoise</i> Modeling risk and time in discrete choice experiments <i>Angela Robinson, University of East Anglia</i>	ESA West 122
10:45-12:15	NURSING HOMES <i>Chair: Theis Theisen, University of Agder</i> Evaluating the allocative efficiency in long term care using variation in occupancy <i>R. Vincent Pohl, University of Georgia</i> How excessive demands, role overload, team climate and training and development influence absenteeism and presenteeism behavior: an analysis across German nursing homes <i>Daniel Schneider, Hamburg Center for Health Economics, University of Hamburg</i> Comparison of the SFA and DEA approaches to estimate the technical efficiency and efficiency factors for the Irish Nursing Homes Sector in Ireland <i>Shiovan NiLuasa, University of Limerick</i> Municipalities' decision to care - at home or in a nursing home <i>Theis Theisen, University of Agder</i>	ESA West 221
10:45-12:15	PUBLIC HEALTH IN DIFFICULT SITUATIONS <i>Chair: Stefan Kohler, Heidelberg University / Charité – Universitätsmedizin Berlin</i> War and public health: The effects of war on the public health system by the example of the Syrian Civil Conflict <i>Georg Schmidt, Alfred Nobel Open Business School</i>	ESA Ost 221

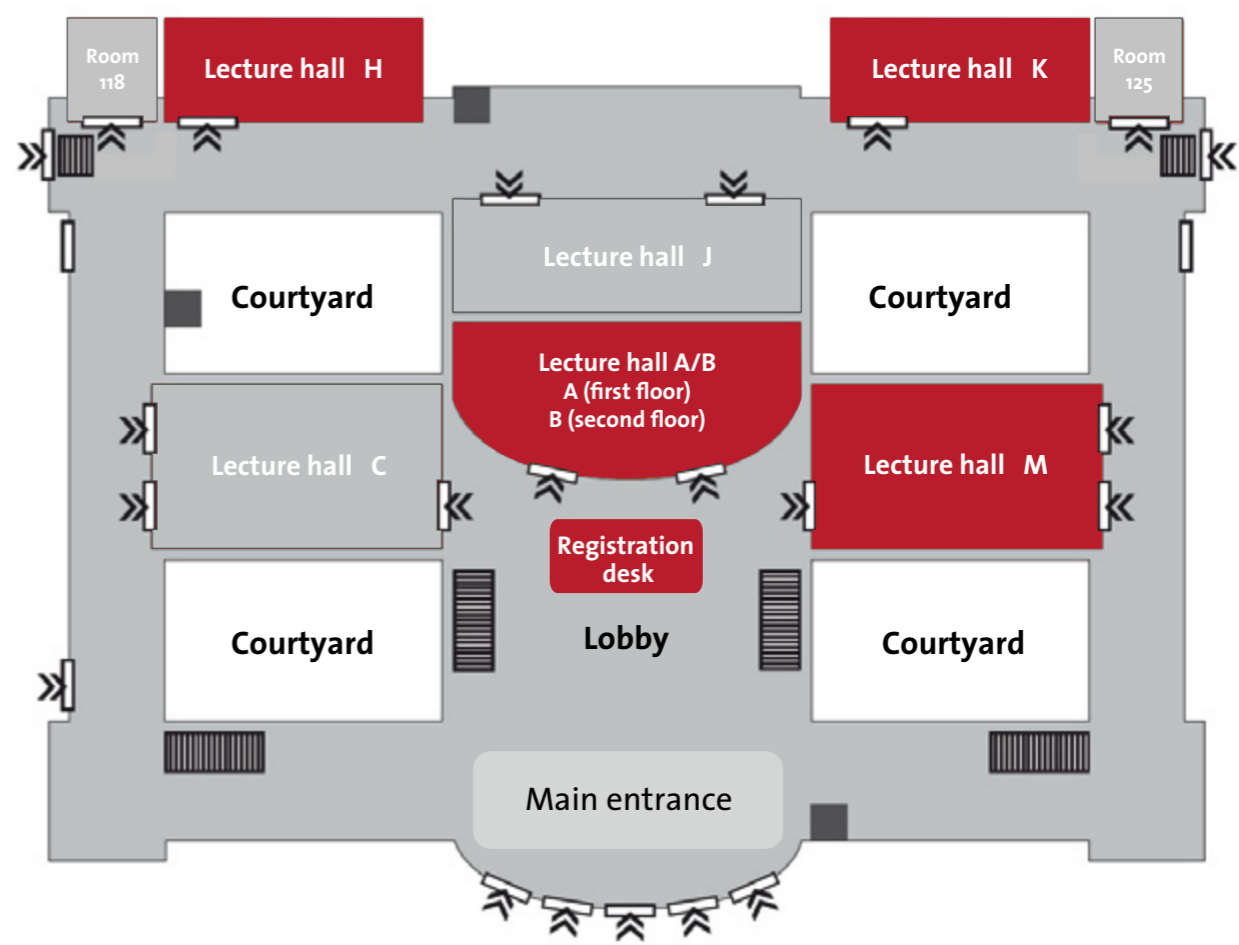
	Unconditional cash transfers for assistance in humanitarian disasters <i>Stefan Lhachimi, University Bremen</i> Health system support and health system strengthening: Two key facilitators to the implementation of ambulatory tuberculosis treatment in Uzbekistan <i>Stefan Kohler, Heidelberg University / Charité – Universitätsmedizin Berlin</i>	
10:45-12:15	STUDIES IN HEALTH RELATED QUALITY OF LIFE <i>Chair: Paula Lorgelly, Office of Health Economics</i> Quality of life in oncology patients: the impact of uncertainty, anxiety and depression and patient's experience: a preliminary analysis <i>Lara Gitto, University of Roma "Tor Vergata"</i> Multi-Attribute Utility (MAU) instruments as tools to value health-related quality of life: German findings from the MIC study <i>Michael Schlander, University of Heidelberg & Institute for Innovation & Valuation in Health Care (InnoVal-HC)</i> Health state values (QALY weights) for Huntington's disease: Findings from the European Huntington's Disease Network (EHDN) <i>Colin Green, University of Exeter</i> Predicting cancer patients' quality of life: an analysis of the relationship between utility, treatment regimes and time <i>Paula Lorgelly, Office of Health Economics</i>	ESA Ost 222
10:45-12:15	THE ROLE OF CAREGIVERS <i>Chair: Emmanouil Mentzakis, University of Southampton</i> Respite service use among caregivers of older people: Comparative analysis of family dementia caregivers with musculoskeletal and circulatory system caregivers <i>Nerina Vecchio, Griffith University</i> Informal care and labour market supply – Does health policy supporting informal care affect caregivers' labour supply? Empirical data for informal dementia care <i>Alla Gorbenko, University of Witten / Herdecke</i> Caring alone? Social capital and the mental health of caregivers <i>Lars Thiel, University of Wuppertal</i> Employment and informal care: a relationship of extensive and intensive margins <i>Emmanouil Mentzakis, University of Southampton</i>	ESA Ost 123
12:15 pm-12:30 pm	TRANSFER BREAK	
12:30 pm - 01:15 pm	CLOSING PLENARY Know the ropes: financial barriers in access to health care <i>Pedro Pita Barros, Universidade Nova de Lisboa</i>	Lecture hall A
01:15 pm - 01:30 pm	INTRODUCTION OF INCOMING EUHEA PRESIDENT AND PRESENTATION OF EUHEA 2018 CONFERENCE VENUE	Lecture hall A
01:30 pm - 02:30 pm	CLOSING RECEPTION <i>Lobby of the Main Building of the University of Hamburg (ESA)</i>	

VENUE PLAN

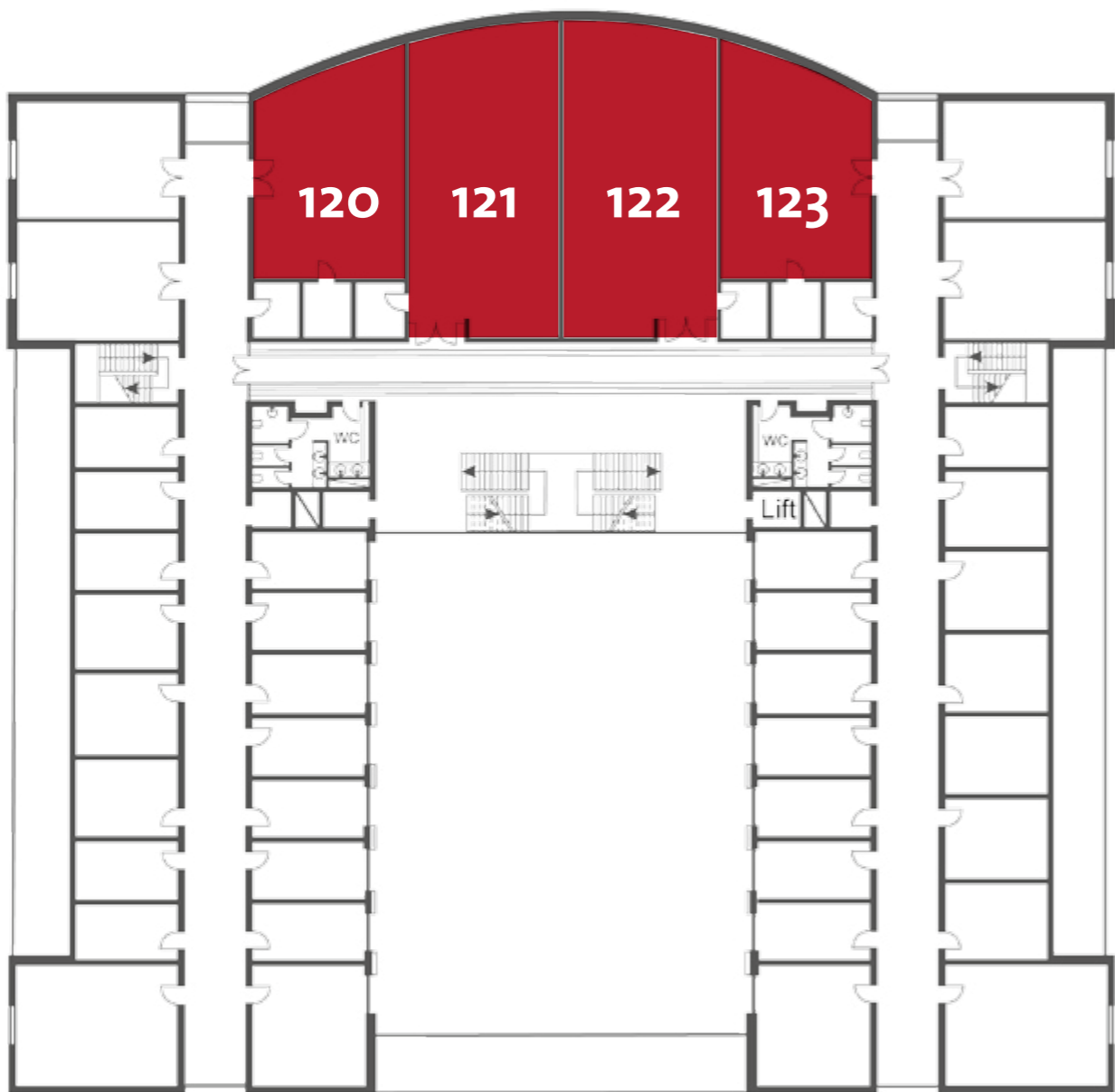
Campus Plan, University of Hamburg



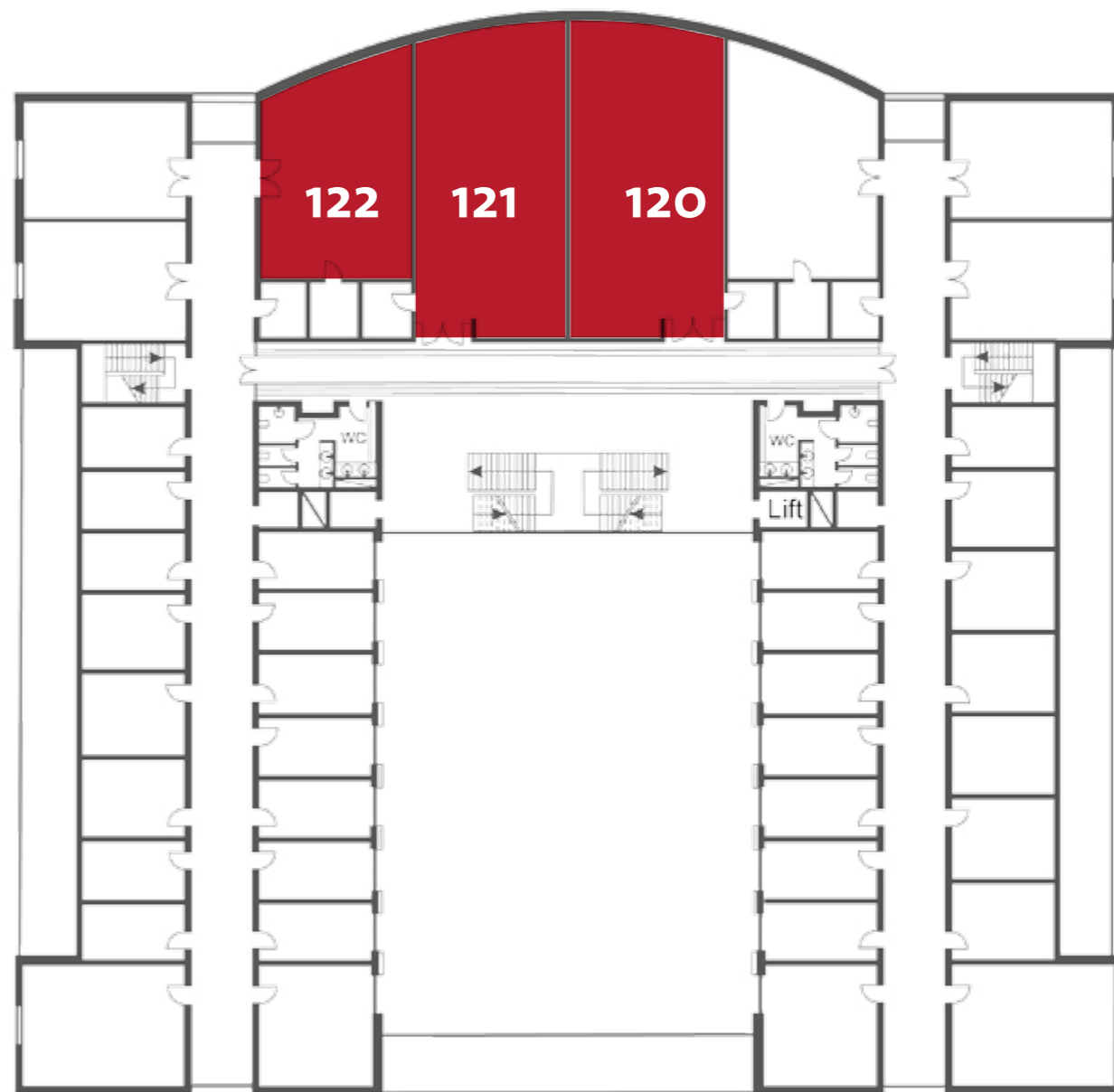
Main Building



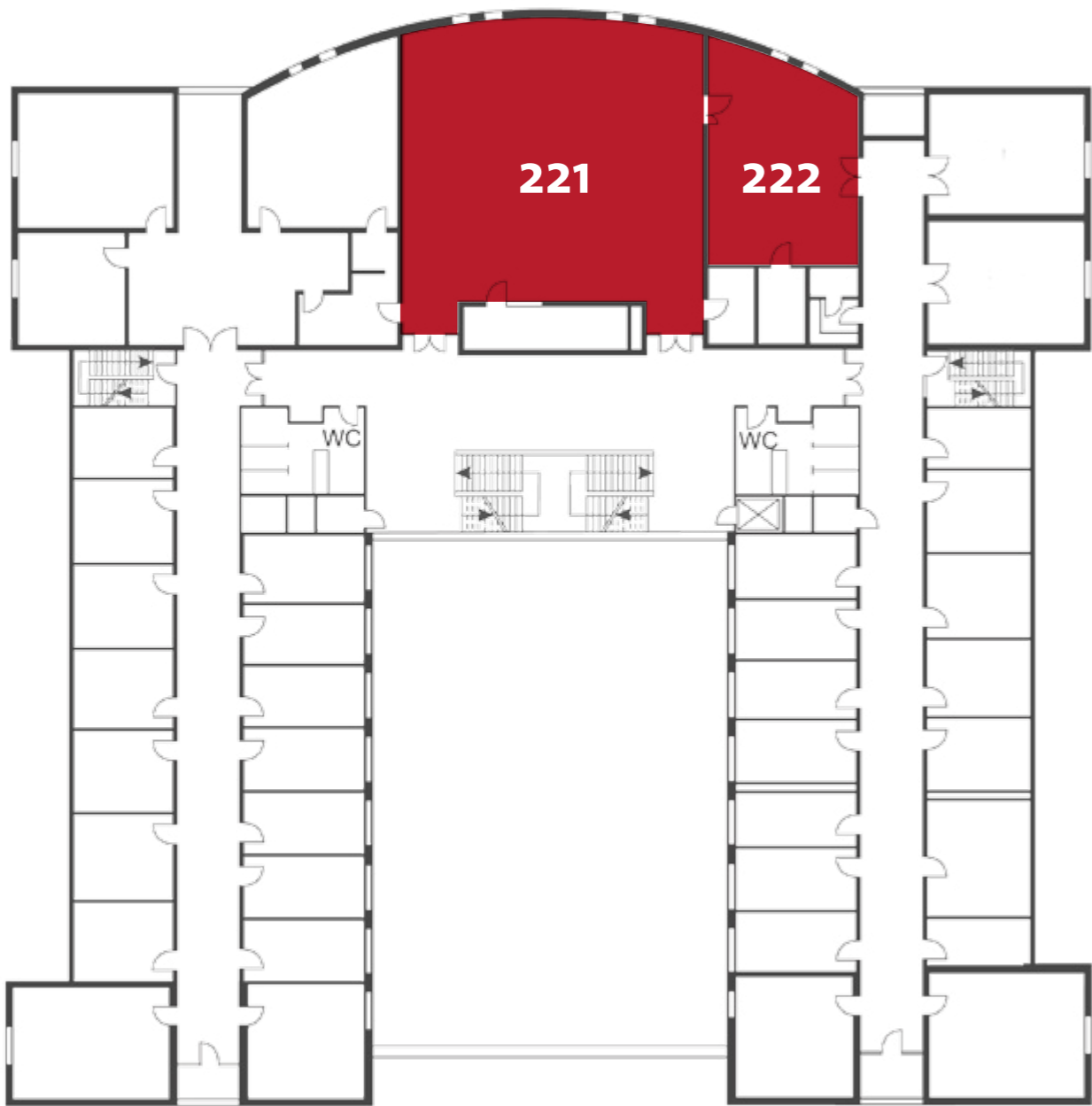
ESA OST / 1. Floor



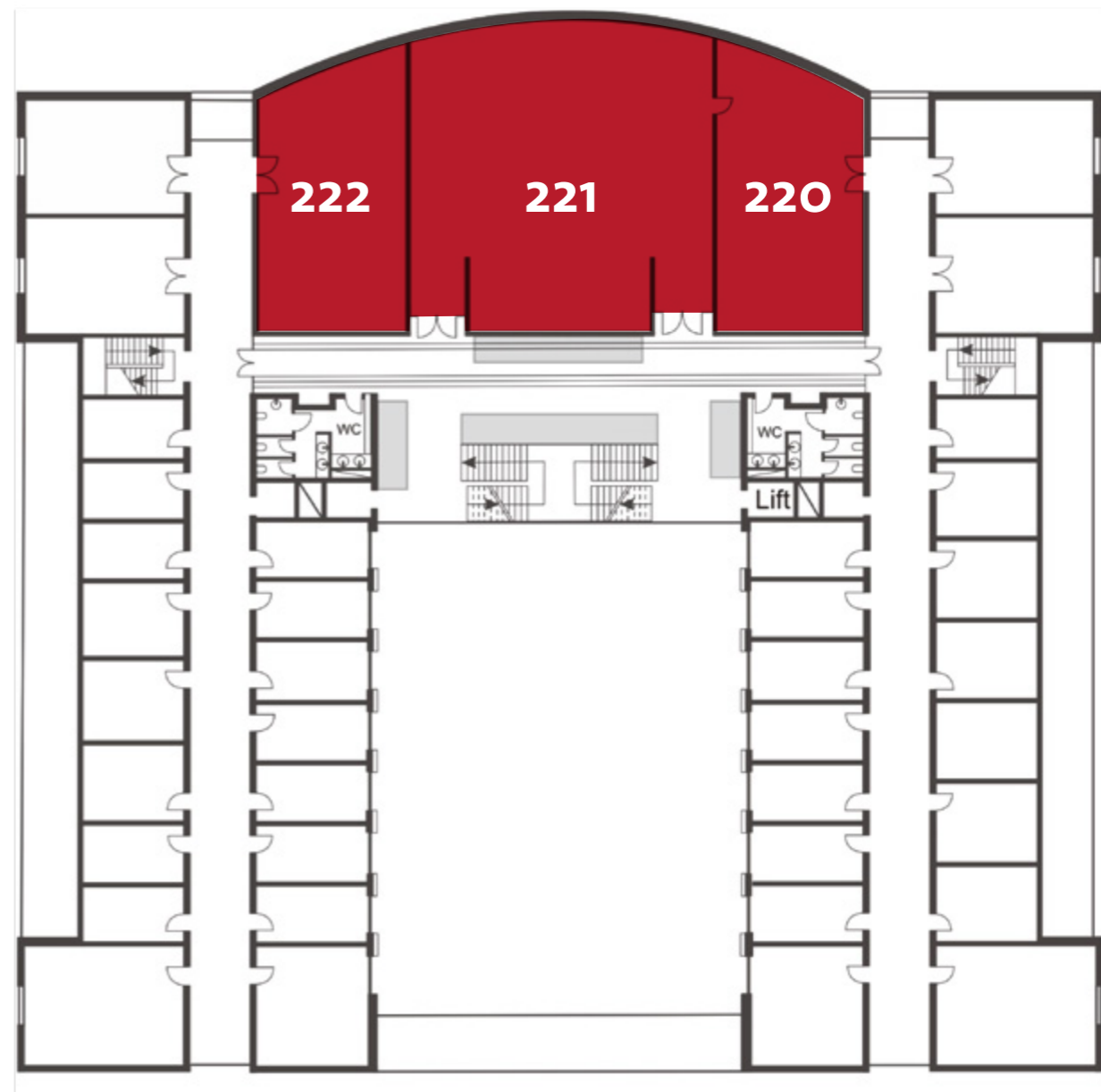
ESA West / 1. Floor



ESA OST / 2. Floor



ESA West / 2. Floor



SPEAKERS

.....

Last name	First name	Institution	E-Mail
Aas	Eline	University of Oslo	eline.aas@medisin.uio.no
Acuna	Lizbeth	Fondo Colombiano de Enfermedades de Alto Costo	lacuna@cuentadealtocosto.org
Adang	Eddy	Radboud university medical centre Nijmegen	eddy.adang@radboudumc.nl
Adeline	Amélie	University of Cergy-Pontoise - THEMA	amelie.adeline@yahoo.fr
Ahammer	Alexander	Johannes Kepler University Linz	alexander.ahammer@jku.at
Ahmed	Sayem	International Centre for Diarrhoeal Disease Research	sayemahmed@icddr.org
Al-Janabi	Hareth	University of Birmingham	h.aljanabi@bham.ac.uk
Allanson	Paul	University of Dundee	p.f.allanson@dundee.ac.uk
Amorim Lopes	Mário	FEUP, INESC-TEC	mario.lobes@fe.up.pt
Anegawa	Tomofumi	Keio University	anegawa@gmail.com
Angerer	Alfred	ZHAW Zurich University of Applied Sciences	alfred.angerer@zhaw.ch
Anselmi	Laura	Manchester Centre for Health Economics	laura.anselmi@manchester.ac.uk
Antoh	Emmanuel	GeoGrafix Solutions and USAID/RING	antoh.gh@gmail.com
Aranda-Reneo	Isaac	University of Castilla-La Mancha	isaac.aranda@uclm.es
Araujo	Daniel Herrera	PSE-Hospinnomics	daniel.herrera@psemail.eu
Arnold	Matthias	LMU Munich	arnold@bwl.lmu.de
Arsenijevic	Jelena	Maastricht University	j.arsenijevic@maastrichtuniversity.nl
Asseburg	Christian	Swedish Institute for Health Economics IHE	christian.asseburg@ihe.se
Atherly	Adam	Colorado School of Public Health	adam.atherly@ucdenver.edu
Attema	Arthur	Erasmus University Rotterdam	attema@bmj.eur.nl
Augustin	Matthias	Hamburg Center for Health Economics, University Medical Center Hamburg-Eppendorf	m.augustin@uke.de
Avdic	Daniel	University of Duisburg-Essen	daniel.avdic@uni-due.de
Awalime	Dziedzom Kwesi	University of Ghana	dawalime@gmail.com
Bähler	Caroline	Department of Health Sciences, Helsana Group	caroline.baehler-baumgartner@helsana.ch
Baji	Petra	Department of Health Economics, Corvinus University of Budapest	petra.baji@uni-corvinus.hu
Ballinger	Geoff	Canadian Institute for Health Information (CIHI)	gballinger@cihi.ca
Barbieri	Paolo Nicola	University of Gothenburg	paolo.barbieri@economics.gu.se
Barrenho	Eliana	Imperial College London	eliana.barrenho@imperial.ac.uk
Barth	Cordula	University Duisburg-Essen	cordula.barth@medman.uni-due.de
Bastião	Rita	Faculty of Economics of the University of Porto	rbastiao.phd@fep.up.pt
Bäuml	Matthias	Hamburg Center for Health Economics, University of Hamburg	matthias.baeuml@uni-hamburg.de
Biermann	Janine	University of Duisburg-Essen	janine.biermann@medman.uni-due.de
Binder	Simon	University of Augsburg	simon.binder@wiwi.uni-augsburg.de
Bindl	Dominik	IMG, University of Bayreuth	dominik.bindl@uni-bayreuth.de
Birch	Steve	Centre for Health Economics at the University of Manchester	
Birg	Laura	University of Göttingen	laura.birg@wiwi.uni-goettingen.de
Biro	Aniko	The University of Edinburgh, Hungarian Academy of Sciences, Corvinus University of Budapest	aniko.biro@ed.ac.uk
Blankart	Carl Rudolf	Hamburg Center for Health Economics, University of Hamburg	rudolf.blankart@uni-hamburg.de
Blázquez-Fernández	Carla	Universidad de Cantabria	carla.blazquez@unican.es
Blome	Christine	Hamburg Center for Health Economics, University Medical Center Hamburg-Eppendorf	c.blome@uke.de
Blozik	Eva	Department of Health Sciences, Helsana Health Insurances	eva.blozik@helsana.ch
Bock	Jens-Oliver	Hamburg Center for Health Economics, University Medical Center Hamburg-Eppendorf	j.bock@uke.de
Boyer	Nicole	University of Glasgow	nicki.boyer@glasgow.ac.uk
Boyers	Dwayne	University of Aberdeen	d.boyers@abdn.ac.uk
Brekke	Kurt	Norwegian School of Economics	kurt.brekke@nhh.no
Brettschneider	Christian	Hamburg Center for Health Economics, University Medical Center Hamburg-Eppendorf	c.brettschneider@uke.de
Bricard	Damien	IRDES	bricard@irdes.fr
Brick	Aoife	Economic and Social Research Institute	aoife.brick@esri.ie
Britteon	Philip	The University of Manchester	philip.britteon@manchester.ac.uk
Bromley	Hannah L.	University of Birmingham	hls39@bham.ac.uk
Brosig-Koch	Jeannette	University of Duisburg-Essen	jeannette.brosig@uni-due.de
Brosse	Jan	Hamburg Center for Health Economics, University of Hamburg	jan.brosse@wiso.uni-hamburg.de
Brunner	Beatrice	Zurich University of Applied Sciences	brub@zhaw.ch

Last name	First name	Institution	E-Mail
Buchberger	Barbara	University of Duisburg-Esse, Institute for Health Care Management and Research	barbara.buchberger@medman.uni-due.de
Buchberger	Barbara	University of Duisburg-Esse, Institute for Health Care Management and Research	
Buennings	Christian	University of Paderborn / RWI – Leibniz Institute for Economic Research	christian.buennings@upb.de
Bungenstock	Jan Michael	vfa. Research-Based Pharmaceutical Companies Germany	j.bungenstock@vfa.de
Butler	Jim	Private consultant	jrgb868@bigpond.com
Capuccinello	Rossella Iraci	Lancaster University	r.iraicapuccinello@lancaster.ac.uk
Carreras	Marc	Serveis de Salut Integrats Baix Empordà - GReSSiReS / Universitat de Girona	marc.carrerasp@udg.edu
Chandoevrit	Worawan	Khon Kaen University	worawan.tdri@gmail.com
Chauvin	Pauline	LRAES - University of Paris Descartes	pauline.chauvin@parisdescartes.fr
Chen	Chi-Chen	Department of Public Health, College of Medicine, Fu-Jen Catholic University	d93845003@ntu.edu.tw
Cheng	Shou-Hsia	Institute of Health Policy and Management, College of Public Health, National Taiwan University	shcheng@ntu.edu.tw
Cheng	Terence	University of Adelaide	terence.cheng@adelaide.edu.au
Chua	Gin Nie	University of Aberdeen	ro1nc13@abdn.ac.uk
Ciminata	Giorgio	University of Glasgow	g.ciminata.1@research.gla.ac.uk
Coast	Joanna	University of Bristol	jo.coast@bristol.ac.uk
Collins	Marissa	Glasgow Caledonian University	marissa.collins@gcu.ac.uk
Colombier	Carsten	Federal Finance Department	carsten.colombier@efv.admin.ch
Connelly	Luke	Professor of Health Economics, School of Economics, University of Queensland	l.connely@uq.edu.au
Connolly	Sheelah	Economic and Social Research Institute	sheelah.connolly@esri.ie
Correia	Filipe	NOVA School of Business and Economics	filipe.p.correia@gmail.com
Coyle	Doug	Brunel University London and University of Ottawa	
Czypionka	Thomas	IHS HealthEcon	thomas.czypionka@ihs.ac.at
da Rocha Fernandes	João Diogo	International Diabetes Federation	joao.fernandes@idf.org
Damrongplasit	Kannika	Faculty of Economics, Chulalongkorn University	kannikad@gmail.com
Davies-Teye	Bernard Bright Kofi	Drifney Consult Ltd and Ghana Health Service	bdaviesteye@yahoo.com
de Oliveira	Claire	Centre for Addiction and Mental Health	de.oliveira.claire@gmail.com
de Vries	Eline	Tilburg University	eline.de.vries@rivm.nl
de Walque	Damien	The World Bank	ddewalque@worldbank.org
de Wit	Ardine	RIVM& UMCU	ardine.de.wit@rivm.nl
del Llano Señaris	Juan	Gaspar Casal Foundation	juan.delllano@fgcasal.org
Dintsios	Charalabos-Markos	Institute for Health Care Research and Health Economics, University of Düsseldorf	dintsios@hhu.de
Dirksen	Carmen	Maastricht University Medical Center	c.dirksen@mumc.nl
Diwakar	Lavanya	University of Birmingham	l.diwakar@bham.ac.uk
Doble	Brett	University of Cambridge	brett.doble@medschl.cam.ac.uk
Donaldson	Cam	Glasgow Caledonian University	cam.donaldson@gcu.ac.uk
Döring	Nora	Karolinska Institutet	nora.doering@ki.se
Došenović Bonča	Petra	Faculty of Economics, University of Ljubljana	petra.d.bonca@ef.uni-lj.si
Douven	Rudy	CPB Netherlands Bureau for Economic Policy Analysis and Erasmus University Rotterdam	R.Douven@cpb.nl
Dragone	Davide	University of Bologna	davide.dragone@unibo.it
Drummond	Michael F.	Centre for Health Economics, University of York	mike.drummond@york.ac.uk
Dysart	Laura	University of Aberdeen	ro1md15@abdn.ac.uk
Effertz	Tobias	Institute for Commercial Law - University of Hamburg	effertz@uni-hamburg.de
Eibich	Peter	University of Oxford	peter.eibich@dph.ox.ac.uk
Errea	Maria	University of Massachusetts Amherst	mariaerrea@umass.edu
Evers	Silvia	Maastricht University and Trimbos Institute	s.evers@maastrichtuniversity.nl
Fang	Hai	China Center for Health Development Studies, Peking University	hfang@hsc.pku.edu.cn
Felder	Stefan	University of Basel	stefan.felder@unibas.ch
Ferreira	Pedro	CEISUC/FEUC	pedrof@fe.uc.pt
Fichera	Eleonora	University of Manchester	eleonora.fichera@manchester.ac.uk
Fischer	Katharina	Hamburg Center for Health Economics, University of Hamburg	katharina.fischer@uni-hamburg.de

SPEAKERS

Last name	First name	Institution	E-Mail
Fischer	Maria M.	Health System Intelligence, Medical University of Vienna	maria.hofmarcher-holzhacker@meduniwien.ac.at
Forder	Julien	University of Kent	j.e.forder@kent.ac.uk
Fordham	Richard	University of East Anglia	r.fordham@uea.ac.uk
Frankovic	Ivan	Vienna Institute of Demography	ivan.frankovic@oeaw.ac.at
Frey	Simon	Hamburg Center for Health Economics, University of Hamburg	simon.frey@uni-hamburg.de
Frimmel	Wolfgang	Johannes Kepler University Linz	wolfgang.frimmel@jku.at
Galama	Titus	University of Southern California	galama@dornsife.usc.edu
Galizzi	Matteo M.	ESRC Future Research Leader Fellow at London School of Economics	
Gaughan	James	Centre for Health Economics, University of York	james.gaughan@york.ac.uk
Geelhoed	Elizabeth	The University of Western Australia	elizabeth.geelhoed@uwa.edu.au
Gehrsitz	Markus	City University of New York - Graduate Center	mgehrsitz@gradcenter.cuny.edu
Gentili	Elena	Università della Svizzera Italiana (University of Lugano)	elena.gentili@usi.ch
Genton	Marine	GATE Lyon Saint Etienne (UMR 5824 CNRS)	genton@gate.cnrs.fr
Geue	Claudia	University of Glasgow	Claudia.Geue@glasgow.ac.uk
Ghali	Nizar	Laval university	nizar.ghali@msss.gouv.qc.ca
Gibson	Jonathan	University of Manchester	jon.m.gibson@manchester.ac.uk
Gil	Joan	University of Barcelona	joangil@ub.edu
Gil-Doménech	Dolors	Universitat Internacional de Catalunya	mdgil@uic.es
Gillessen	Andrea	Techniker Krankenkasse	andrea.gillessen@tk.de
Girard	Dorota	University of Nantes	dorota.girard@univ-nantes.fr
Gitto	Lara	University of Roma "Tor Vergata"	Gitto@CEIS.uniroma2.it
Goldzahl	Léontine	Université Paris Dauphine	leontine.goldzahl@gmail.com
Gomes	Sofia Cruz	FEUP	up200401798@fe.up.pt
Gorbenko	Alla	University of Witten/Herdecke	alla.gorbenko@uni-wh.de
Gordeev	Vladimir Sergeevich	London School of Hygiene & Tropical Medicine	vladimir.gordeev@lshtm.ac.uk
Gorry	Philippe	University of Bordeaux	philippe.gorry@u-bordeaux.fr
Gottschalk	Felix	ETH Zurich	fgottschalk@ethz.ch
Gousia	Katerina	University of Kent	A.Gousia@kent.ac.uk
Grasic	Katja	Centre for Health Economics, University of York	katja.grasic@york.ac.uk
Green	Colin	University of Exeter	c.green@exeter.ac.uk
Grobicki	Laura	University College London	laura.grobicki@ucl.ac.uk
Groene	Oliver	OptiMedis AG/London School of Hygiene and Tropical Medicine	oliver.groene@lshtm.ac.uk
Guhl	Dennis	Hamburg Center for Health Economics, University of Hamburg	dennis.guhl@uni-hamburg.de
Guillon	Marlène	Paris School of Economics - Sciences Po	marlene.guillon@sciencespo.fr
Gunnensen	Morten	Region Syddanmark	morten.gunnensen@rsyd.dk
Günther	Isabel	ETH Zürich	isabel.guenther@nadel.ethz.ch
Gutacker	Nils	Centre for Health Economics, University of York	nils.gutacker@york.ac.uk
Gyrd-Hansen	Dorte	COHERE, Department of Business and Economics & Department of Public Health, University of Southern Denmark	
Hackert	Mariska	Erasmus University, Institute of Health Policy and Management	hackert@bmg.eur.nl
Hagen	Terje P.	University of Oslo	t.p.hagen@medisin.uio.no
Hajek	André	Hamburg Center for Health Economics, University Medical Center Hamburg-Eppendorf	a.hajek@uke.de
Hajizadeh	Mohammad	School of Health Administration - Dalhousie University	m.hajizadeh@dal.ca
Häkkinen	Unto	CHES (Centre for Health and Social Economics) National Institute for Health and Welfare	unto.hakkinen@thl.fi
Hasan	Mohammad Monirul	Center for Development Research (ZEF), University of Bonn	mhasan@uni-bonn.de
Hasan	Shaikh Mehdi	International Centre for Diarrhoeal Disease Research, Bangladesh	mehdi.icddr@gmail.com
Hauge	Karen	The Frisch Centre	k.e.hauge@frisch.uio.no
Hayen	Arthur	Tilburg University / RIVM	a.p.hayen@uvt.nl
Heger	Dörte	RWI – Leibniz Institute for Economic Research	doerte.heger@rwi-essen.de
Heider	Dirk	Hamburg Center for Health Economics, University Medical Center Hamburg-Eppendorf	d.heider@uke.de
Heijink	Richard	RIVM	richard.heijink@rivm.nl
Helmchen	Lorens	The George Washington University	helmchen@gwu.edu
Henschke	Cornelia	Technische Universität Berlin, Department of Health Care Management	cornelia.henschke.1@tu-berlin.de

SPEAKERS

Last name	First name	Institution	E-Mail
Herberholz	Chantal	Faculty of Economics, Chulalongkorn University	chantal.h@chula.ac.th
Hernández-Pizarro	Helena M.	Pompeu Fabra University (UPF) & CRES	helenahernandez@upf.edu
Hernandez-Villafuerte	Karla	The Office of Health Economics	KHernandez-Villafuerte@ohe.org
Herr	Annika	DICE, Heinrich-Heine-Universität Düsseldorf	annika.herr@dice.hhu.de
Hilgsmann	Mickael	Maastricht University	m.hilgsmann@maastrichtuniversity.nl
Hill	Harry	Centre for Health Economics at the University of Manchester	harry.hill@manchester.ac.uk
Hilleringmann	Vanessa	University of Paderborn	vanessa.hilleringmann@wiwi.upb.de
Himmel	Konrad	Hamburg Center for Health Economics, University of Hamburg	konrad.himmel@wiso.uni-hamburg.de
Hodgson	Ashley	St. Olaf College	hodgsona@stolaf.edu
Hofer	Florian	Hamburg Center for Health Economics, University of Hamburg	florian.hofer@wiso.uni-hamburg.de
Hofmann	Sarah	WifOR	sarah.hofmann@wifor.de
Holle	Rolf	Helmholtz Zentrum München	holle@helmholtz-muenchen.de
Holom	Geir Hiller	University of Oslo	g.h.holom@medisin.uio.no
Hone	Thomas	Imperial College London	thomas.hone12@imperial.ac.uk
Hong	Yi-chen	Chinese Culture University	ychong@faculty.pccu.edu.tw
Horný	Michal	Boston University School of Public Health	mhorny@bu.edu
Hostenkamp	Gisela	COHERE University of Southern Denmark	gh@sam.sdu.dk
Hsieh	Chee-Ruey	Duke University	chee.ruey.hsieh@duke.edu
Hsu	John	Massachusetts General Hospital and Harvard Medical School	John.Hsu@mgh.harvard.edu
Huber	Carola A.	Department of Health Sciences, Helsana Group	carola.huber@helsana.ch
Hübler	Philipp	University of Augsburg	philipp.huebler@wiwi.uni-augsburg.de
Hunter	Rachael	University College London (UCL)	r.hunter@ucl.ac.uk
Huter	Kai	SOCIUM - Research Center on Inequality and Social Policy, University of Bremen	huter@uni-bremen.de
Iizuka	Toshiaki	Department of Economics, University of Tokyo	toshi.iizuka@gmail.com
Ingerfurth	Stefan	SRH Mobile University of Applied Sciences	stefan.ingerfurth@hs-riedlingen.de
Irvine	Alastair	Health Economics Research Unit, University of Aberdeen	ro1adi14@abdn.ac.uk
Irvine	Lisa	University of East Anglia	l.irvine@uea.ac.uk
Islam	Kamrul	Uni Research	kamrul.islam@uni.no
Iversen	Tor	University of Oslo	tor.iversen@medisin.uio.no
Jackson	Louise	University of Birmingham	l.jackson.1@bham.ac.uk
Jahn	Beate	UMIT - University for Health Sciences, Medical Informatics and Technology, Hall i.T.	Beate.Jahn@umit.at
Jakovljevic	Mihajlo (Michael)	University of Kragujevac Faculty of Medical Sciences, Kragujevac	sidartagothama@gmail.com
Jimenez-Rubio	Dolores	University of Granada	dolores@ugr.es
Jommi	Claudio	Department of Pharmaceutical Sciences, Università del Piemonte Orientale, Novara	claudio.jommi@unibocconi.it
Joore	Manuela	Maastricht University Medical Center	m.joore@mumc.nl
Jusot	Florence	Université Paris Dauphine	florence.jusot@dauphine.fr
Kaarboe	Oddvar	HELED, UIO	oddvar.kaarboe@medisin.uio.no
Kaarbøe	Oddvar	University of Oslo	o.m.kaarboe@medisin.uio.no
Kacker	Seema	Johns Hopkins University Bloomberg School of Public Health	skacken@jhmi.edu
Kairies-Schwarz	Nadja	University of Duisburg-Essen	nadja.kairies@ibes.uni-due.de
Kaiser	Matthias J.	University of Bayreuth	matthias.kaiser@uni-bayreuth.de
Kalamov	Zarko	University of Technology Berlin	zarko.y.kalamov@tu-berlin.de
Kalo	Zoltan	Syreon Research Institute	
Kan	Kamhon	Academia Sinica	kk@sinica.edu.tw
Karaca-Mandic	Pinar	University of Minnesota	pkmandic@umn.edu
Karagiannis	Roxani	Centre of Planning and Economic Research (KEPE)	rkarag@kepe.gr
Karlsberg Schaffer	Sarah	Office of Health Economics	sschaffer@ohe.org
Karmann	Alexander	Technische Universität Dresden	alexander.karmann@tu-dresden.de
Kasteridis	Panagiotis	University of York	panos.kasteridis@york.ac.uk
Kaufmann	Cornel	University of Lucerne	cornel.kaufmann@unilu.ch
Keel	George	Karolinska Institutet, Stockholm	george.keel@ki.se
Keetharuth	Anju	University of Sheffield	d.keetharuth@sheffield.ac.uk
Kifmann	Mathias	Hamburg Center for Health Economics, University of Hamburg	mathias.kifmann@wiso.uni-hamburg.de
Kilic	Mustafa	Hta agency	herrkillmustafa@hotmail.de

Last name	First name	Institution	E-Mail
Kim	Bora	LISER & KU Leuven	Bora.KIM@liser.lu
Kleij	Kim-Sarah	Hannover Medical School	kleij.kim-sarah@mh-hannover.de
Klose	Kristina	University of Bielefeld, Leibniz Universität Hannover / CHERH	kristina.klose@uni-bielefeld.de
Knöpfel	Stefanie	Friedrich-Alexander-Universität Erlangen-Nürnberg	stefanie.knoepfel@uk-erlangen.de
Kohler	Stefan	Heidelberg University / Charité – Universitätsmedizin Berlin	stefan.kohler@uni-heidelberg.de
Kokot	Johanna	Universität Duisburg-Essen, CINCH	Johanna.Kokot@ibes.uni-due.de
Konnopka	Alexander	Hamburg Center for Health Economics, University Medical Center Hamburg-Eppendorf	a.konnopka@uke.de
Kopinska	Joanna	CEIS, University of Rome Tor Vergata	kopinska@economia.uniroma2.it
Krabbe	Laura	University of Duisburg-Essen	laura.krabbe@medman.uni-due.de
Krämer	Jonas	Hamburg Center for Health Economics, University of Hamburg	jonas.kraemer@wiso.uni-hamburg.de
Kraus	Markus	Institute for Advanced Studies	kraus@ihs.ac.at
Kreimeier	Simone	University of Bielefeld, Faculty of Health Sciences, Department for Health Economics and Health Care Management	simone.kreimeier@uni-bielefeld.de
Kreimendahl	Fabian	Institute of Empirical Health Economics	fabian.kreimendahl@ifeg.de
Kreis	Kristine	Center for Health Economics Research Hannover (CHERH), Leibniz University of Hannover	kjk@cherh.de
Krensel	Magdalene Eva	Hamburg Center for Health Economics, University Medical Center Hamburg-Eppendorf	m.krensel@uke.de
Kriegel	Johannes	University of Applied Sciences Upper Austria, School of Applied Health and Social Sciences	johannes.kriegel@fh-linz.at
Krieger	Tina	RTI Health Solutions	tkrieger@rti.org
Kristensen	Søren Rud	University of Manchester	soren.kristensen@manchester.ac.uk
Kristensen	Troels	Univerrsity of Southern Denmark, COHERE & Research Unit of General Practice	trkristensen@health.sdu.dk
Krucien	Nicolas	University of Aberdeen	nicolas.krucien@abdn.ac.uk
Kucher	Andreas	University of Augsburg	andreas.kucher@wiwi.uni-augsburg.de
Kuhlmann	Alexander	Leibniz Universität Hannover	ak@cherh.de
Kuhn	Bertolt	Medical University of Hannover	kuhn.bertolt@mh-hannover.de
Kumar	Shailender	Institute for Studies in Industrial Development (ISID), New Delhi	skhooda.jnu@gmail.com
Kyle	Margaret	MINES ParisTech	margaret.kyle@mines-paristech.fr
Laberge	Maude	University of Florida	maude.laberge@phhp.ufl.edu
Laliotis	Ioannis	University of Surrey	i.laliotis@surrey.ac.uk
Lamu	Admassu N.	University of Tromsø	admassu.n.lamu@uit.no
Landa	Paolo	University of Genoa - Department of Economics and Business studies	paolo.landa@unige.it
Landeiro	Filipa	University of Oxford	filipa.landeiro@dph.ox.ac.uk
Langebrake	Claudia	University Medical Centre Hamburg-Eppendorf, Hospital Pharmacy and Department of Stem Cell Transplantation	c.langebrake@uke.de
Langenbruch	Anna	Hamburg Center for Health Economics, University Medical Center Hamburg-Eppendorf	a.langenbruch@uke.de
Lauenroth	Victoria	Hamburg Center for Health Economics, University of Hamburg	victoria.lauenroth@wiso.uni-hamburg.de
Laxy	Michael	Institute of Health Economics and Health Care Management, Helmholtz Zentrum München	michael.laxy@helmholtz-muenchen.de
Lebioda	Andrea	Amgen GmbH	andrea.lebioda@amgen.com
Leidl	Reiner	Helmholtz Zentrum München	leidl@helmholtz-muenchen.de
Leppert	Florian	Bielefeld University	florian.leppert@uni-bielefeld.de
Lepuschütz	Lena	Austrian Public Health Institute	lena.lepuschuetz@goeg.at
Levaggi	Rosella	University of Brescia	rosella.levaggi@unibs.it
Lhachimi	Stefan	University Bremen	stefan.lhachimi@uni-bremen.de
Li	Jinhu	University of Melbourne	jlinhu.li@unimelb.edu.au
Liao	Eva Chih-Hsien	National Taiwan University	evas118@gmail.com
Liao	Kai-Ting	Ministry of Health and Welfare (Taiwan) ROC	ktliao589@gmail.com
Liberatore	Florian	Zurich University of Applied Sciences	florian.liberatore@zhaw.ch
Lin	Yu-Shiuan	Insitute of Health Policy and Management, National Taiwan University	do3848001@ntu.edu.tw
Lindlbauer	Ivonne	Hamburg Center for Health Economics, University Medical Center Hamburg-Eppendorf	i.lindlbauer@uke.de
Longo	Francesco	University of York	f168o@york.ac.uk
Lord	Joanne	University of Southampton	j.lord@soton.ac.uk
Lorgelly	Paula	Office of Health Economics	plorgelly@ohe.org

Last name	First name	Institution	E-Mail
Lu	Jui-fen Rachel	Department of Health Care Management, Chang Gung University	rachel@mail.cgu.edu.tw
Lugo-Palacios	David G.	London School of Hygiene and Tropical Medicine	David.Lugo@lshtm.ac.uk
Machado	Matilde	Universidad Carlos III de Madrid	matilde.machado@uc3m.es
Machado	Sara R.	Boston University	sararm@bu.edu
Majoie	Marian	Maastricht University Medical Center	MajoieM@kempenhaeghe.nl
Maljanen	Timo	Social Insurance Institution	timo.maljanen@kela.fi
Marcus	Jan	Hamburg Center for Health Economics, University of Hamburg	jan.marcus@wiso.uni-hamburg.de
Margier	Jennifer	GATE Lyon-Saint-Etienne (UMR 5824 CNRS), Grenoble University Hospital, Léon Bérard Cancer Centre, Grenoble-Lyon	jmargier@chu-grenoble.fr
Marques-Gomes	Joao	Nova School of Business and Economics	joao.marques-gomes@outlook.com
Martikainen	Janne	School of Pharmacy, University of Eastern Finland	janne.martikainen@uef.fi
Martschinke	Belinda	EBS Universität für Wirtschaft und Recht	belinda.martschinke@ebs.edu
Mateus	Ceu	Division of Health Research, Lancaster University	c.mateus@lancaster.ac.uk
Maurer	Jürgen	University of Lausanne	jurgen.maurer@unil.ch
Mayer	Susanne	Medical University of Vienna, Centre for Public Health, Department of Health Economics	susanne.mayer@meduniwien.ac.at
McCollister	Kathryn	University of Miami	kmccolli@miami.edu
McHugh	Neil	Yunus Centre for Social Business and Health, Glasgow Caledonian University	neil.mchugh@gcu.ac.uk
McMeekin	Nicola	University of Glasgow	Nicola.Mcmeekin@gla.ac.uk
Meng	Qingyue	China Center for Health Development Studies, Peking University	qmeng@bjmu.edu.cn
Mennini	Francesco Saverio	University of Rome "Tor Vergata"	f.mennini@uniroma2.it
Mentzakis	Emmanouil	University of Southampton	e.mentzakis@soton.ac.uk
Meregaglia	Michela	CeRGAS (Research Centre on Health and Social Care Management), Università Bocconi; London School of Hygiene and Tropical Medicine	michela.meregaglia@unibocconi.it
Mesquida	Yannis	University of Lausanne, Faculty of Business and Economics (HEC)	yannis.mesquida@unil.ch
Meyer	Sophie-Charlotte	University of Wuppertal	sophie.meyer@wiwi.uni-wuppertal.de
Michalowsky	Bernhard	German Center for Neurodegenerative Diseases within the Helmholtz Association, Rostock/Greifswald	bernhard.michalowsky@dzne.de
Milstein	Ricarda	Hamburg Center for Health Economics, University of Hamburg	ricarda.milstein@wiso.uni-hamburg.de
Miraldo	Marisa	Imperial College London	
Mitchell	Paul	University of Bristol	paul.mitchell@bristol.ac.uk
Mohnen	Sigrid M.	National Institute of Public Health and the Environment	sigrid.mohnen@rivm.nl
Monstad	Karin	Uni Research Rokkan Center, University of Bergen	karin.monstad@uni.no
Montuenga-Gomez	Victor	University of Zaragoza	vimontue@unizar.es
Moore	Patrick	Trinity College Dublin	patrick.moore@tcd.ie
Mora	Toni	Universitat Internacional de Catalunya	tmora@uic.es
Mørkbak	Morten Raun	University of Southern Denmark	mrm@sam.sdu.dk
Moscelli	Giuseppe	University of York	giuseppe.moscelli@york.ac.uk
Moullan	Yasser	University of Oxford	yasser.moullan@qeh.ox.ac.uk
Müller	Michael	Organisation of Economic Cooperation and Development (OECD), Paris	michael.mueller@oecd.org
Müller	Tobias	University of Lucerne	tobias.mueller@unilu.ch
Munford	Luke	Manchester Centre for Health Economics	luke.munford@manchester.ac.uk
Muñoz	Celia	Universitat Pompeu Fabra	celia.munoz@upf.edu
Murphy	Aileen	University College Cork	aileen.murphy@ucc.ie
Murphy	Jacqueline	University of Oxford	jacqueline.murphy@dph.ox.ac.uk
Nagel	Korbinian	Helmut-Schmidt-University Hamburg	korbinian.nagel@yahoo.de
Napierala	Christoph	University of Lucerne	napierala@gmx.net
Neusser	Silke	Institute for Health Care Management and Research	silke.neusser@medman.uni-due.de
Nguyen	Lien	National Institute for Health and Welfare THL	lien.nguyen@thl.fi
NiLuasa	Shiovan	University of Limerick	Shiovan.NiLuasa@ul.ie
Nishimura	Yoshinori	The University of Tokyo	nishimura.yy@gmail.com
Nolan	Anne	Economic and Social Research Institute Dublin	anne.nolan@esri.ie
Non	Marielle	CPB	m.c.non@cpb.nl
Nosal	Kathleen	University of Mannheim	kathleen.nosal@gmail.com
O'Neill	Ciaran	National University of Ireland - Galway (NUIG)	ciaran.oneill@nuigalway.ie
Obermann	Konrad	MIPH, University of Heidelberg	konrad.obermann@medma.uni-heidelberg.de

Last name	First name	Institution	E-Mail
Oga	Agbaya	Université Félix Houphouët-Boigny	ass_oga@yahoo.fr
Ohinata	Asako	University of Leicester	a0160@le.ac.uk
Ökem	Zeynep	Department of International Entrepreneurship, TOBB University of Economics and Technology	zgokem@etu.edu.tr
Oliveira	Teresa	Faculdade Economia - Univ. Coimbra	tcarla@fe.uc.pt
Olivella	Pau	Universitat Autònoma de Barcelona	pau.olivella@uab.cat
Oppel	Eva-Maria	Hamburg Center for Health Economics, University of Hamburg	eva.oppel@wiso.uni-hamburg.de
Or	Zeynep	IRDES	Or@irdes.fr
Ortega Ortega	Marta	Applied Economics Department. School of Economics and Business. University of Granada. Granada	mortega2@ugr.es
Ostermann	Herwig	Austrian Public Health Institute	herwig.ostermann@goeg.at
Panthöfer	Sebastian	Universidad Carlos III de Madrid	spanthoefer@gmail.com
Parkinson	Beth	The University of Manchester	beth.parkinson@postgrad.manchester.ac.uk
Pekola	Piia	Social Insurance Institution of Finland	piia.pekola@kela.fi
Pelissier	Aurore	LEDi - Université de Bourgogne - CNRS 6307 - INSERM U1200	aurore.pelissier@u-bourgogne.fr
Pellet	Sandra	Paris Dauphine University	s_pellet@yahoo.fr
Peña	Luz María	University of Castilla-La Mancha	luzmaria.pena@uclm.es
Persson	Josfine	University of Gothenburg, Sahlgrenska Academy	josefine.persson2@neuro.gu.se
Pertile	Paolo	University of Verona	paolo.pertile@univr.it
Phillips	Elena A.	Hamburg Center for Health Economics, University of Hamburg	elena.phillips@uni-hamburg.de
Piazolo	Marc	University of Applied Sciences Kaiserslautern	marc.piazolo@hs-kl.de
Pierre	Aurélié	Irdes	pierre@irdes.fr
Pilny	Adam	RWI – Leibniz Institute for Economic Research	adam.pilny@rwi-essen.de
Piniashko	Oresta	Danylo Halytsky Lviv National Medical University	orestapb@gmail.com
Pita Barros	Pedro	Universidade Nova de Lisboa	ppbarros@novasbe.pt
Pizzo	Elena	University College London	e.pizzo@ucl.ac.uk
Plaul	Cornelius	TU Dresden	cornelius.plaul@tu-dresden.de
Plessow	Rafael	ZHAW - Winterthur Institute of Health Economics	pleo@zhaw.ch
Poder	Thomas	UETMIS and Centre de Recherche du CHUS, CIUSSS de l'Estrie - CHUS	tpoder.chus@ssss.gouv.qc.ca
Pohl	R. Vincent	University of Georgia	pohl@uga.edu
Pokhrel	Subhash	Brunel University London	Subhash.Pokhrel@brunel.ac.uk
Prada	Sergio	Universidad Icesi	siprada@icesi.edu.co
Prakash	Ipshita	McGill University	ipshita.prakash@mail.mcgill.ca
Pross	Christoph	Berlin University of Technology, Department of Health Care Management	christoph.pross@campus.tu-berlin.de
Pruckner	Gerald J.	Johannes Kepler University of Linz	gerald.pruckner@jku.at
Pujolras	Laia Maynou	CRES, Universitat Pompeu Fabra	laia.maynou@gmail.com
Qu	Tingting	Sun Yat-sen University	qutingtinggz@gmail.com
Quaife	Matthew	London School of Hygiene and Tropical Medicine	matthew.quaife@lshtm.ac.uk
Quan	Jianchao	The University of Hong Kong	chao.quan@hku.hk
Ramos	Pedro	FMUP, HCFMUSP	pedrosaldanharamos@live.com.pt
Ramos	Ricardo	INFARMED, I.P.	ricardo.ramos@infarmed.pt
Reber	Katrin Christiane	Hamburg Center for Health Economics, University Medical Center Hamburg-Eppendorf	k.reber@uke.de
Redekop	Ken	Medical Technology Assessment, Erasmus Universiteit Rotterdam	redekop@bmg.eur.nl
Reich	Oliver	Helsana	oliver.reich@helsana.ch
Reif	Simon	University of Erlangen-Nuremberg & IDK Evidence Based Economics	simon.reif@fau.de
Reile	Rainer	University of Tartu	rainer.reile@ut.ee
Remmerswaal	Minke	CPB Netherlands Bureau for Economic Policy Analysis, Tilburg University the Netherlands	m.remmerswaal@cpb.nl
Renner	Anna-Theresa	Austrian Public Health Institute	anna.renner@goeg.at
Richard	Moussa	THEMA / Université de Cergy-Pontoise	moussakr@gmail.com
Ride	Jemimah	Centre for Health Economics, Monash University	jemimah.ride@monash.edu
Riedel	Monika	Institut für Advanced Studies, Vienna	riedel@ihs.ac.at
Riguzzi	Marco	Zürich University of Applied Sciences	rigu@zhaw.ch
Robinson	Angela	University of East Anglia	angela.robinson@uea.ac.uk
Robone	Silvana	University of Insubria	silvana.robone@uninsubria.it
Rodrigues	Ricardo	European Centre for Social Welfare Policy and Research	rodrigues@euro.centre.org

Last name	First name	Institution	E-Mail
Rodriguez Caro	Alejandro	ULPGC	alejandro.rodriguez@ulpgc.es
Rodriguez-Sanchez	Beatriz	University of Groningen	b.rodriguez.sanchez@rug.nl
Roesel	Felix	ifo Institute, Dresden Branch	roesel@ifo.de
Rogalewicz	Vladimir	CzechHTA, Faculty of Biomedical Engineering, Czech Technical University in Prague	rogalewicz@fbmi.cvut.cz
Rognoni	Carla	Centre for Research on Health and Social Care Management (CeRGAS), Bocconi University, Milan, Italy	carla.rognoni@unibocconi.it
Röttger	Julia	BerlinHECOR, TU Berlin	julia.roettger@tu-berlin.de
Round	Jeff	University of Bristol	jeff.round@bristol.ac.uk
Ruggeri	Matteo	Catholic University of Sacred Heart - Rome	mruggeri@rm.unicatt.it
Ryan	Mandy	Aberdeen University	m.ryan@abdn.ac.uk
Sabia	Joseph	San Diego State University & IZA	jsabia@mail.sdsu.edu
Salm	Martin	Tilburg University	m.salm@uvt.nl
Santana	Idaira Rodriguez	University of York (Centre for Health Economics)	idsr500@york.ac.uk
Santos	João Vasco	Faculty of Medicine, University of Porto	jvasco.santos@gmail.com
Sari	Nazmi	University of Saskatchewan	nazmi.sari@usask.ca
Schäfer	Ines	hche-IVDP-UKE	ines.schaefer@uke.de
Schlander	Michael	University of Heidelberg & Institute for Innovation & Valuation in Health Care (InnoVal-HC)	michael.schlander@innoval-hc.com
Schmid	Andreas	University of Bayreuth	andreas.schmid@uni-bayreuth.de
Schmidt	Georg	Alfred Nobel Open Business School	spl406@alumni.ku.dk
Schmidt	Katharina	Center for Health Economics Research Hannover, Leibniz Universität Hannover	ks@cherh.de
Schmidt	Marion	Zurich University of Applied Sciences	marion.schmidt@zhaw.ch
Schneider	Daniel	Hamburg Center for Health Economics, University of Hamburg	daniel.schneider@uni-hamburg.de
Schneider	Udo	WINEG	dr.udo.schneider@wineg.de
Schnell	Molly	Princeton University	molly.k.schnell@gmail.com
Schober	Thomas	Johannes Kepler University Linz	thomas.schober@jku.at
Schrem	Harald	Hannover Medical School	Schrem.Harald@mh-hannover.de
Schulte	Timo	OptiMedis AG	t.schulte@optimedis.de
Schulz	Claudia	Hamburg Center for Health Economics, University Medical Center Hamburg-Eppendorf	c.schulz@uke.de
Schumann	Mathias	Hamburg Center for Health Economics, University of Hamburg	mathias.schumann@wiso.uni-hamburg.de
Schünemann	Johannes	University of Göttingen	johannes.schuenemann@wiwi.uni-goettingen.de
Schut	Erik	Erasmus University Rotterdam	schut@bmg.eur.nl
Schwander	Bjoern	AHEAD GmbH	Bjoern.Schwander@ahead-net.de
Schwandt	Hannes	University of Zurich	schwandt@princeton.edu
Schwarzkopf	Larissa	Helmholtz Zentrum München / Institute for health economics and health care management	l.schwarzkopf@helmholtz-muenchen.de
Schwärzler	Marion Cornelia	WifOR GmbH	marion.schwaerzler@wifor.de
Schwendicke	Falk	Charité - Universitätsmedizin Berlin, Dpt. of Operative and Preventive Dentistry	falk.schwendicke@charite.de
Schwettmann	Lars	Martin Luther University Halle-Wittenberg	Lars.Schwettmann@wiwi.uni-halle.de
Sensi	Flavio	ASL Sassari - Sardegna	fsensi@aslsassari.it
Serra-Sastre	Victoria	City University London	v.serra-sastre@city.ac.uk
Serrano Alarcon	Manuel	Escola Nacional Saude Pública	m.alarcon@ensp.unl.pt
Shaikh	Mujaheed	Frankfurt School of Finance and Management	m.shaikh@fs.de
Shen	Jing	Newcastle University	jing.shen@newcastle.ac.uk
Shishkin	Sergey	The National Research University - Higher School of Economics	shishkin@hse.ru
Siciliani	Luigi	Department of Economics, University of York	luigi.siciliani@york.ac.uk
Sicsic	Jonathan	Centre Léon Bérard	jonathan.sicsic@inserm.fr
Siedler	Thomas	Hamburg Center for Health Economics, University of Hamburg	thomas.siedler@wiso.uni-hamburg.de
Siegel	Martin	Technische Universität Berlin, BerlinHECOR	martin.siegel@tu-berlin.de
Skedgel	Chris	University of East Anglia	c.skedgel@uea.ac.uk
Smith	Peter	Imperial College London	peter.smith@imperial.ac.uk
Sohn	Alexander	Universität Göttingen	asohn@uni-goettingen.de
Sommersguter-Reichmann	Margit	University of Graz	margit.sommersguter@uni-graz.at
Sopina	Liza	Centre of Health Economics Research, University of Southern Denmark	esopina@sdu.dk

Last name	First name	Institution	E-Mail
Sørensen	Jan	Centre of Health Economics Research, University of Southern Denmark	jas@health.sdu.dk
Sousa	Sílvia	University of Minho	ssousa@eeg.uminho.pt
Souza	Julio	Faculty of Medicine of the University of Porto	juliobsouza@gmail.com
Spach	Miléna	Université Paris 1 Panthéon-Sorbonne (CES)	milena.spach@univ-paris1.fr
Sroczynski	Gaby	UMIT – University of Health Sciences, Medical Informatics and Technology, Hall iT	gaby.sroczynski@umit.at
Stargardt	Tom	Hamburg Center for Health Economics, University of Hamburg	Tom.Stargardt@wiso.uni-hamburg.de
Stark	Renee	Helmholtz Zentrum München, IGM	r.stark@helmholtz-muenchen.de
Stavropoulou	Charitini	City University London	C.Stavropoulou@city.ac.uk
Stavrunova	Olena	University of Technology, Sydney	olena.stavrunova@uts.edu.au
Steinbach	Sandro	Swiss Federal Institute of Technology in Zurich	sandro_steinbach@ethz.ch
Steinbuck	Joana	Universität Witten/Herdecke	joana.steinbuck@uni-wh.de
Stella	Luca	University of Wuppertal	Stella@wiwi.uni-wuppertal.de
Stepurko	Tetiana	National University of Kyiv-Mohyla Academy	stepurko12@gmail.com
Strulik	Holger	University of Goettingen	holger.strulik@wiwi.uni-goettingen.de
Strumann	Christoph	University of Kiel	cstrumann@bwl.uni-kiel.de
Stuart	Bruce	University of Maryland Baltimore	Bstuart@rx.umaryland.edu
Sugawara	Shinya	University of Tokyo	sugahra@gmail.com
Sulku	Seher Nur	Gazi University	nursulku@gazi.edu.tr
Svensson	Mikael	University of Gothenburg	mikael.svensson.2@gu.se
Takaku	Reo	Institute for Health Economics and Policy, Tokyo	reo.takaku@ihep.jp
Tambor	Marzena	Institute of Public Health; Jagiellonian University Collegium Medicum	marzenawozniak8@wp.pl
Tan	Elise Chia-Hui	National Taiwan University	d95843007@ntu.edu.tw
Tang	Meng-Chi	National Chung Cheng University	mengchi@gmail.com
Tangermann	Ulla	Hannover Medical School	tangermann.ulla@mh-hannover.de
Tanovic	Zlata	Vrije Universiteit Amsterdam, Amsterdam Institute for International Development	z.tanovic@vu.nl
Tarricone	Rosanna	Department of Policy Analysis and Public Management, Bocconi University	
Tauchmann	Harald	FAU	harald.tauchmann@fau.de
Tenand	Marianne	PSE-ENS	marianne.tenand@univ-paris1.fr
Theisen	Theis	University of Agder	theis.theisen@uia.no
Theurl	Engelbert	University of Innsbruck	engelbert.theurl@uibk.ac.at
Thiel	Andrea	Hamburg Center for Health Economics, University of Hamburg	andrea.thiel@wiso.uni-hamburg.de
Thiel	Lars	University of Wuppertal	thiel@wiwi.uni-wuppertal.de
Timur	Aysegul	Hodges University	atimur@hodges.edu
Torbica	Aleksandra	Università Luigi Bocconi	aleksandra.torbica@unibocconi.it
Towse	Adrian	Office for Health Economics	atowse@ohe.org
Treskova	Marina	Center for Health Economics Research Hannover (CHERH)	mt@cherh.de
Trimborn	Timo	University of Goettingen	timo.trimborn@wiwi.uni-goettingen.de
Tsai	Wei-Der	Graduate Institute of Industrial Economics, National Central University	twd@cc.ncu.edu.tw
Tsiachrisras	Apostolos	University of Oxford	apostolos.tsiachristas@dph.ox.ac.uk
Tzogiou	Christina	Zurich University of Applied Sciences	christina.tzogiou@zhaw.ch
Ultsch	Bernhard	Robert Koch Institute	UltschB@rki.de
Unger	Oliver	Julius-Maximilians-Universität Würzburg	oliver.unger@uni-wuerzburg.de
van den Broek	Eline	University of Colorado Anschutz Medical campus	eline.vandenbroek@ucdenver.edu
van der Pol	Marjon	University of Aberdeen	m.vanderpol@abdn.ac.uk
van Exel	Job	Erasmus University Rotterdam - Institute of Health Policy & Management	vanexel@bmg.eur.nl
Van Gestel	Raf	University of Antwerp	raf.vangestel@uantwerpen.be
van Mastrigt	Ghislaine	Maastricht University	g.vanmastrigt@maastrichtuniversity.nl
Vandoros	Sotiris	King's College London	s.vandoros@kcl.ac.uk
Varabyova	Yauheniya	Hamburg Center for Health Economics, University of Hamburg	Yauheniya.Varabyova@wiso.uni-hamburg.de
Vargas-Palacios	Armando	University of Leeds	a.vargas-palacios@leeds.ac.uk
Varkevisser	Marco	Erasmus University Rotterdam	varkevisser@bmg.eur.nl
Vecchio	Nerina	Griffith University	n.vecchio@griffith.edu.au
Veldwijk	Jorien	Uppsala University & RIVM	jorien.veldwijk@rivm.nl

Last name	First name	Institution	E-Mail
Verbeek	Olaf	Università della Svizzera Italiana	olaf.verbeek@usi.ch
Vervaaert	Mathyn	University of Oslo	
Vigé	Magalie	University of Poitiers	magalie.vige@univ-poitiers.fr
Viluma	Laura	University of Groningen	l.viluma@rug.nl
Vivas-Consuelo	David	Research Centre for Health Economics and Management. Universitat Politècnica de València	dvivas@upvnet.upv.es
Vogler	Sabine	Gesundheit Österreich GmbH (GÖG/Austrian Public Health Institute)	sabine.vogler@goeg.at
Vogt	Verena	Technische Universität Berlin	verena.vogt@tu-berlin.de
Wahyuni	Heni	Universitas Gadjah Mada	hwahyuni@ugm.ac.id
Walendzik	Anke	University Duisburg-Essen	Anke.Walendzik@medman.uni-due.de
Walsh	Edel	University College Cork	e.walsh@ucc.ie
Walter	Julia	Helmholtz Zentrum München	Julia.Walter@helmholtz-muenchen.de
Wasem	Juergen	University Duisburg-Essen	juergen.wasem@medman.uni-due.de
Weatherly	Helen	Centre for Health Economics	helen.weatherly@york.ac.uk
Weaver	France	James Madison University	weaverfm@jmu.edu
Weber-Baghdiguan	Lexane	Paris-Dauphine University, LEDa-LEGOS	lexane.weber@gmail.com
Weegen	Lennart	University of Duisburg-Essen	lennart.weegen@medman.uni-due.de
Weinhold	Ines	WIG2, Leipzig	ines.weinhold@wig2.de
Wen	Yu-Ping	Chang Gung University	ypwen@mail.cgu.edu.tw
Wende	Danny	WIG2 Wissenschaftliches Institut für Gesundheitsökonomie und Gesundheitssystemforschung	wende@wig2.de
Weschenfelder	Ann-Kathrin	University of Duisburg-Essen	Ann-Kathrin.Weschenfelder@medman.uni-due.de
Whittaker	William	University of Manchester	william.whittaker@manchester.ac.uk
Wichert	Sebastian	LMU Munich	sebastian.wichert@econ.lmu.de
Widmer	Philippe	Polynomics/ ETH Zürich	philippe.widmer@polynomics.ch
Wiesen	Daniel	University of Cologne	wiesen@wiso.uni-koeln.de
Wieser	Simon	Zurich University of Applied Sciences	wiso@zhaw.ch
Willemé	Peter	Federal Planning Bureau	pw@plan.be
Wilson	Edward	University of Cambridge	ed.wilson@medschl.cam.ac.uk
Winter	Vera	Hamburg Center for Health Economics, University of Hamburg	vera.winter@uni-hamburg.de
Wittwer	Jérôme	University of Bordeaux	jerome.wittwer@u-bordeaux.fr
Woode	Maame Esi	INSERM-SESSTIM UMR 912	maame-esi.woode@inserm.fr
Wübker	Ansgar	RWI – Leibniz Institute for Economic Research	ansgar.wuebker@rwi-essen.de
Wuppermann	Amelie	LMU Munich	amelie.wuppermann@econ.lmu.de
Xu	Mike	Universität Bayreuth (RW, IMG), Hong Kong Institute of Health Economics	mike.tsui@163.com
Yan	Zhang	Huazhong University of Science and Technology	yanzhang@hust.edu.cn
Yang	Ming-Chin	Institute of Health Policy and Management, National Taiwan University	mcyang637@ntu.edu.tw
Yen	Siew Hwa	Universiti Sains Malaysia	shyen@usm.my
Yerokhin	Oleg	University of Wollongong	oleg@uow.edu.au
Zander	Nicole	Hamburg Center for Health Economics, University Medical Center Hamburg-Eppendorf	n.zander@uke.de
Zang	Wenbin	Southwestern U of Finance and Economics	zangwenbin@swufe.edu.cn
Zerrar	Nina	Paris Dauphine University	corinne.zerrar@gmail.com
Zhang	Wei	Centre for Health Evaluation and Outcome Sciences; University of British Columbia	wzhang@cheos.ubc.ca
Ziebarth	Nicolas	Cornell University	nrz2@cornell.edu
Zocher	Katrin	University of Linz Department of Health Economics	Katrin.Zocher@jku.at
Zöllner	York	HAW Hamburg	yorkfrancis.zoellner@haw-hamburg.de
Zoutenbier	Robin	CPB	r.zoutenbier@cpb.nl
Zuba	Martin	Austrian Public Health Institute	martin.zuba@gmx.net

European Health Economics PhD Program “Improving Quality of Care in Europe” (IQCE)

15 PhD student positions are available for the IQCE program starting in Summer 2017

SIX EUROPEAN UNIVERSITIES

- University of Hamburg, Hamburg Center for Health Economics (HCHE) *coordinator*
- Bocconi University, Centre for Research on Health and Social Care Management (CERGAS)
- Erasmus University Rotterdam, Institute of Health Policy & Management (iBMG)
- Universidade Nova de Lisboa, Nova School of Business and Economics (Nova SBE)
- University of Southern Denmark, Centre of Health Economics Research (COHERE)
- University of York, Centre for Health Economics York (CHE)

and the global medical device manufacturer **St. Jude Medical Inc.** are establishing a European Training Network entitled Improving Quality of Care in Europe:

THE AIM

of the program is to improve the quality and performance of European health care systems. Each PhD thesis will focus on one of six dimensions of health care quality as defined by the World Health Organization (WHO): effectiveness, safety, efficiency, access, equitability and acceptability. The IQCE program offers highly competitive funding and working conditions. Successful candidates will receive a salary in accordance with the Marie Skłodowska Curie regulations for early stage researchers.

THE CRITERIA

Applicants must meet the following eligibility criteria

Recognized master's degree in health economics, economics, business administration or other economic degrees: To be eligible for admission to the program students need to have a high-quality master's degree or an equivalent academic degree from an internationally recognized university.

Early Stage Researcher (ESR) or 0-4 years (Post Graduate) are those who, at the time of recruitment by the host university, are in the first four years (or full-time equivalent) of their research careers. This is measured from the date they obtained a degree which formally entitled them to embark on a doctorate.

Conditions of international mobility of researchers: At the time of selection by the host university, researchers must not have resided or carried out their main activity (work, studies, etc.) in the country of their host university for more than 12 months in total during the 3 years immediately prior to recruitment.

English language: Network fellows (ESRs) must demonstrate that their ability to understand and express themselves in both written and spoken English is sufficiently advanced for them to fully benefit from the network training.

EUHEA CONFERENCE 2018

Shaping the Future: the Role of Health Economics



/ 11 July – 14 July 2018

Maastricht / The Netherlands

[www.euhea2018.eu /](http://www.euhea2018.eu/)

2017–18 HARKNESS FELLOWSHIPS in HEALTH CARE POLICY and PRACTICE Call for Applications

THE COMMONWEALTH FUND invites promising mid-career professionals—government policymakers, academic researchers, clinical leaders, hospital and insurance managers, and journalists—from Australia, Canada, France, Germany, the Netherlands, New Zealand, Norway, and the United Kingdom—to apply for a unique opportunity to spend up to 12 months in the United States as a Harkness Fellow in Health Care Policy and Practice. Established by The Commonwealth Fund in 1925, the Harkness Fellowships were modeled after the Rhodes Scholarships and aim to produce the next generation of health policy leaders in participating countries.

Fellows are placed with mentors who are leading U.S. experts at organizations such as Harvard University, Stanford University, Kaiser Permanente, and the Institute for Healthcare Improvement to study issues relevant to The Commonwealth Fund's mission to support a high performing health care system—insurance coverage, access, and affordability; health care delivery system reforms (e.g., bundled payments, accountable care organizations, innovative approaches to care for high-need/high-cost patients); cost containment; and other critical issues on the health policy agenda in both the U.S. and their home countries. A peer-reviewed journal article or policy report for Health Ministers and other high-level policy audiences is the anticipated product of the fellowship. Harkness Fellows have published their findings in top-tier journals, including: *BMJ*, *Health Affairs*, and *New England Journal of Medicine*.

The Commonwealth Fund brings together the full class of Fellows throughout the year to participate in a series of high-level policy briefings and leadership seminars with U.S. health care leaders. Building on their fellowship experiences, Harkness Fellows have moved into senior positions within academia, government, and health care delivery organizations, making valuable contributions to health policy and practice at home and in the United States.

EACH FELLOWSHIP PROVIDES UP TO U.S. \$130,000 IN SUPPORT, which covers roundtrip airfare to the U.S., living allowance, project-related travel, travel to fellowship seminars, health insurance, and U.S. federal and state taxes. A family supplement (i.e., approximately \$60,000 for a partner and two children up to age 18) is also provided to cover airfare, living allowance, and health insurance.

The Commonwealth Fund is a private foundation, established in 1918 and based in New York, which aims to promote a high performing health care system that achieves better access, improved quality, and greater efficiency, particularly for society's most vulnerable.

“

The Harkness Fellowship provided me with a wealth of opportunities that have significantly impacted my professional development and brought me into the fold of the international health research community. While in the United States, I was placed at a preeminent university, where I developed a research project on long-term care and quality with my mentor. Throughout the Harkness Fellowship, I gained unparalleled access to U.S. and international health experts, including, for example, the chance to have breakfast with the German Minister of Health at the International Symposium, which subsequently led to an invitation to report the results of my research project to the Ministry of Health once back in Germany. Only through the extensive support from The Commonwealth Fund would this have been possible.

”

Prof. Dr. Stephanie Stock

*(2007-08 Fellow)
Acting Director
Institute for Health Economics and Clinical Epidemiology
University of Cologne*



The
**COMMONWEALTH
FUND**

APPLICATION DEADLINES

September 6, 2016:
Australia and New Zealand

November 14, 2016:
Canada, France, Germany,
the Netherlands, Norway, and the U.K.

VISIT

www.commonwealthfund.org/fellowships
for more details and to apply.

12th World Congress in Health Economics Revolutions in the Economics of Health Systems



Boston, Massachusetts
8-11 July 2017





EUHEA CONFERENCE 2016

11th EUROPEAN CONFERENCE ON HEALTH ECONOMICS

KNOW THE ROPES – BALANCING COSTS AND QUALITY IN HEALTH CARE

JULY 13 – 16, 2016

*Hosted by the Hamburg Center for Health Economics,
joint center of the University of Hamburg and
the University Medical Center Hamburg-Eppendorf (UKE)*

www.euhea2016.eu



Universität Hamburg
DER FORSCHUNG | DER LEHRE | DER BILDUNG